

NATIONAL CRANE®

LOAD CHARTS NTC55L

**85% STABILITY
ON OUTRIGGERS**

303251

SERIAL NUMBER

CONTENTS

GENERAL NOTES	6-7
WIND SPEED AND WEIGHT REDUCTIONS	8
LINE PULLS & REEVING INFO / HOIST PERFORMANCE	9
LIFTING AREA DIAGRAM.....	10
RANGE DIAGRAM WITH EXTENSION	11

WITH 6000 lb COUNTERWEIGHT

ON OUTRIGGERS FULLY EXTENDED - 360°

MAIN BOOM	12
36' OFFSETABLE EXTENSION - 0° OFFSET.....	13
36' OFFSETABLE EXTENSION - 15° OFFSET.....	14
36' OFFSETABLE EXTENSION - 30° OFFSET.....	15

ON OUTRIGGERS FULLY EXTENDED - OVER REAR

MAIN BOOM	16
36' OFFSETABLE EXTENSION - 0° OFFSET.....	17
36' OFFSETABLE EXTENSION - 15° OFFSET.....	18
36' OFFSETABLE EXTENSION - 30° OFFSET.....	19

ON OUTRIGGERS 75% EXTENDED - 360°

MAIN BOOM	20
36' OFFSETABLE EXTENSION - 0° OFFSET.....	21
36' OFFSETABLE EXTENSION - 15° OFFSET.....	22
36' OFFSETABLE EXTENSION - 30° OFFSET.....	23

ON OUTRIGGERS 50% EXTENDED - 360°

MAIN BOOM	24
36' OFFSETABLE EXTENSION - 0° OFFSET.....	25
36' OFFSETABLE EXTENSION - 15° OFFSET.....	26
36' OFFSETABLE EXTENSION - 30° OFFSET.....	27

ON OUTRIGGERS 0% EXTENDED - 360°

MAIN BOOM	28
-----------------	----

CONTENTS (continued)

WITH 3000 lb COUNTERWEIGHT

ON OUTRIGGERS FULLY EXTENDED - 360°

MAIN BOOM.....	29
36' OFFSETABLE EXTENSION - 0° OFFSET.....	30
36' OFFSETABLE EXTENSION - 15° OFFSET.....	31
36' OFFSETABLE EXTENSION - 30° OFFSET.....	32

ON OUTRIGGERS FULLY EXTENDED - OVER REAR

MAIN BOOM.....	33
36' OFFSETABLE EXTENSION - 0° OFFSET.....	34
36' OFFSETABLE EXTENSION - 15° OFFSET.....	35
36' OFFSETABLE EXTENSION - 30° OFFSET.....	36

ON OUTRIGGERS 75% EXTENDED - 360°

MAIN BOOM.....	37
36' OFFSETABLE EXTENSION - 0° OFFSET.....	38
36' OFFSETABLE EXTENSION - 15° OFFSET.....	39
36' OFFSETABLE EXTENSION - 30° OFFSET.....	40

ON OUTRIGGERS 50% EXTENDED - 360°

MAIN BOOM.....	41
36' OFFSETABLE EXTENSION - 0° OFFSET.....	42
36' OFFSETABLE EXTENSION - 15° OFFSET.....	43
36' OFFSETABLE EXTENSION - 30° OFFSET.....	44

ON OUTRIGGERS 0% EXTENDED - 360°

MAIN BOOM.....	45
----------------	----

CONTENTS (continued)

WITH NO COUNTERWEIGHT

ON OUTRIGGERS FULLY EXTENDED - 360°

MAIN BOOM.....	46
36' OFFSETABLE EXTENSION - 0° OFFSET.....	47
36' OFFSETABLE EXTENSION - 15° OFFSET.....	48
36' OFFSETABLE EXTENSION - 30° OFFSET.....	49

ON OUTRIGGERS FULLY EXTENDED - OVER REAR

MAIN BOOM.....	50
36' OFFSETABLE EXTENSION - 0° OFFSET.....	51
36' OFFSETABLE EXTENSION - 15° OFFSET.....	52
36' OFFSETABLE EXTENSION - 30° OFFSET.....	53

ON OUTRIGGERS 75% EXTENDED - 360°

MAIN BOOM.....	54
36' OFFSETABLE EXTENSION - 0° OFFSET.....	55
36' OFFSETABLE EXTENSION - 15° OFFSET.....	56
36' OFFSETABLE EXTENSION - 30° OFFSET.....	57

ON OUTRIGGERS 50% EXTENDED - 360°

MAIN BOOM.....	58
36' OFFSETABLE EXTENSION - 0° OFFSET.....	59
36' OFFSETABLE EXTENSION - 15° OFFSET.....	60
36' OFFSETABLE EXTENSION - 30° OFFSET.....	61

ON OUTRIGGERS 0% EXTENDED - 360°

MAIN BOOM.....	62
----------------	----

NOTES FOR LIFTING CAPACITIES

GENERAL:

1. Rated loads as shown on lift chart pertain to this machine as originally manufactured and equipped. Modifications to the machine or use of optional equipment other than that specified can result in a reduction of capacity.
2. Construction equipment can be hazardous if improperly operated or maintained. Operation and maintenance of this machine shall be in compliance with the information in the Operator's and Safety Handbook, Service Manual and Parts Manual supplied with this machine. If these manuals are missing, order replacements from the manufacturer through the distributor.
3. The operator and other personnel associated with machine shall fully acquaint themselves with the latest American National Safety Standards (ASME/ANSI) for cranes.

SETUP:

1. The machine shall be level and on a firm supporting surface. Depending on the nature of the supporting surface, it may be necessary to have structural supports under the outrigger floats or tires to spread the load to a larger bearing surface.
2. For outrigger operation, all outriggers shall be properly extended with tires raised free of crane weight before operating the boom or lifting loads.
3. When machine is equipped with center front stabilizer, the front stabilizer shall be set in accordance with instructions in Operator's and Safety Handbook.
4. When equipped with removable and/or extendible counterweight, the proper counterweight shall be installed and fully extended before and during operation.
5. With certain boom and hoist tackle combinations, maximum capacities may not be obtainable with standard cable lengths.
6. Unless approved by the crane manufacturer, do not travel with boom extension or jib erected unless otherwise noted. Refer to Operator's and Safety Handbook for job-site travel information.
7. Inspect vehicle and crane including crane operation prior to use each day.
8. Always level the crane with the level indicator located at each outrigger control station.

OPERATION:

1. Rated loads at rated radius shall not be exceeded. Do not attempt to tip the machine to determine allowable loads. For clamshell, grapple, magnet or concrete bucket operation, weight of component and load must not exceed 80% of rated lifting capacities.
2. All rated loads have been tested to and meet the requirements of SAE J1063 - Cantilevered Boom Crane Structures - Method of Test, and do not exceed 85% of the tipping load on outriggers fully extended, and SAE J1289 - Mobile Crane Stability Ratings [$1.25P < (T-0.1A)$] on outriggers 75%, 50% and 0% extended (fully retracted) as determined by SAE J765 - Crane Stability Test Code.
3. Rated loads include the weight of hookblock, slings and auxiliary lifting devices and their weights shall be subtracted from the listed rating to obtain the net load to be lifted. When more than the minimum required parts of line needed to pick the load are used, the additional rope weight as measured from the lower sheaves of the main boom nose shall be considered part of the load to be lifted. When both the hook block and headache ball are reeved, the lifting device that is NOT in use, including the line as measured from the lower sheave(s) of the nose supporting the unused device shall be considered part of the load.
4. Load ratings are based on freely suspended loads. No attempt shall be made to move a load horizontally on the ground in any direction.
5. The "maximum permissible wind speed" referenced in the capacity charts is the "3-second wind gust speed" measured at the boom tip height. These permissible wind speeds are based on the "wind resistance area of load" equal to 0.0059 square feet per pound of load. For larger "wind resistance area of load" refer to Operator's Manual for allowable reduced wind speeds. The maximum permissible in-service wind speed is 30 mph. Only with main boom on fully extended outriggers, lifting the load is allowed at appropriately reduced capacity when the wind speed is greater than 30 mph and less than or equal to 45 mph. Refer to Capacity Reduction Factors on page 7. For machines not in-service, the main boom should be retracted and lowered with the swing brake set when wind speeds (3-second gust speed at boom tip height) exceed 45 mph.
6. Rated loads are for lift crane service only.
7. Do not operate at a radius or boom length where capacities are not listed. At these positions, the machine may overturn without any load on the hook.
8. The maximum load which can be telescoped is not definable because of variations in loadings and crane maintenance, but it is safe to attempt retraction and extension of the boom within the limits of the capacity chart.
9. When the boom length or lift radius or both are between values listed, the smallest load shown at either the next larger radius or next longer or shorter boom length shall be used.

NOTES FOR LIFTING CAPACITIES (continued)

OPERATION: (continued)

10. For safe operation, the user shall make due allowances for his particular job conditions, such as: soft or uneven ground, out of level conditions, high winds, side loads, pendulum action, jerking or sudden stopping of loads, experience of personnel, two machine (tandem) lifts, traveling with loads, electric wires, obstacles, hazardous conditions, etc. Side pull on boom or extension is extremely dangerous.
11. When handling personnel, the requirements of the applicable national, state, and local regulations and safety codes must be met.
12. The boom angle before loading should be greater than the loaded boom angle to account for deflection.
13. When operating the machine in the "On Outriggers 75% or 50% Extended " mode, the outrigger beam pins must be engaged. When operating in the "On Outriggers 0% Extended " mode, the outrigger beams must be fully retracted. Failure to follow these precautions could result in structural damage or loss of stability of the machine.
14. Do not lift loads when boom is fully lowered. The Rated Capacity Limiter (RCL) senses pressure and will not provide warnings or lockout. The crane can become overloaded if lift cylinder(s) is fully retracted.
15. Use RCL/angle indicator as reference only.
16. Do not exceed extension capacities at any reduced boom length.
17. Capacities for the 36.8 ft. boom length shall be lifted with boom fully retracted. If boom is not fully retracted, capacities shall not exceed those shown for the 48 ft. boom length.
18. Always pay out load line before extending boom to avoid damaging loadline or crane structure or tripping anti-two-block system.
19. The maximum outrigger pad load is 76,000 lb (for a GVW of 19,760 lb - minimum chassis requirement).
20. Loads lifted must be within safe winch capacity. Multiple part rope reeving must be used on loads exceeding winch single part rated pull. Auxiliary boom head rated for single part use except multi-reeve group used for nominal rated load. Extensions are rated for single part use only.
21. Do not operate the boom over personnel or allow them to walk or stand beneath the boom or load.
22. Do not allow personnel on carrier deck or crane frame area when rotating crane.
23. Do not allow personnel to ride on hook, hook block, or load. Handling of personnel is only permitted with full extension of all outrigger beams. Use only National Crane approved baskets for boom attached platforms.
24. If using offset extension, do not use personnel basket with extension deployed at 15 or 30 degree offset.
25. Operate controls slowly and smoothly to avoid damage to crane or personnel.
26. Boom must be in carrying rack and outriggers fully retracted for travel.
27. Maintain a clearance of at least 10 feet between any part of the crane, loadline, or load, and any electrical line carrying up to 50,000 volts. One foot of clearance is required for every additional 30,000 volts or less.

DEFINITIONS:

1. Operating Radius: Horizontal distance from a projection of the axis of rotation to the supporting surface before loading to the center of the vertical hoist line or tackle with load applied.
2. Loaded Boom Angle (Shown in Parenthesis on Main Boom Capacity Chart): is the angle between the boom base section and the horizontal, after lifting the rated load at the rated radius with the rated boom length.
3. Working Area: Areas measured in a circular arc about the center line of rotation as shown on the working area diagram.
4. Freely Suspended Load: Load hanging free with no direct external force applied except by the lift cable.
5. Side Load: Horizontal force applied to the lifted load either on the ground or in the air.
6. No load stability limit: The stability limit radius is the radius beyond which it is not permitted to position the boom plus block configuration because machine can overturn without any load on the hook.
7. Structural length limit: An area where the boom, or the boom with jib deployed, cannot be extended because of structural limitations.

CAPACITY REDUCTION FACTORS FOR WIND SPEED, $V(z)$, GREATER THAN 30 mph

(Only for lifting with Main Boom on Fully Extended Outriggers, with or without Stowed Extension)

For wind speed (3-second gust speed at boom tip height), $V(z) > 30 \text{ mph} \leq 45 \text{ mph}$, the *Reduced Capacity* shall be calculated by multiplying the *Published Rated Capacity* by the following factors:

V (z) > 30 mph ≤ 45 mph	Main Boom Length in Feet										
	36.8	48	60	72	84	96	108	120	132	144	150.5
Factor	0.8	0.8	0.8	0.7	0.7	0.7	0.6	0	0	0	0

Wind Resistance Area of Load, ***Awr*** (*load*), shall not exceed Maximum Allowable Wind Resistance Area, ***Awr*** (*allow*).

Maximum Allowable Wind Resistance Area in ft², ***Awr*** (*allow*) = 0.0059 x *Calculated Reduced Capacity* in lb.

Wind Resistance Area of load, ***Awr*** (*load*) = Projected Wind Area (*A_p*) x Wind Drag Coefficient (*C_d*) for the load.

For Wind Resistance Area of load, ***Awr*** (*load*) > Maximum Allowable Wind Resistance Area, ***Awr*** (*allow*) refer to guidance in the Crane Operator's Manual.

WEIGHT REDUCTIONS FOR LOAD HANDLING DEVICES

Auxiliary boom nose (single sheave)	79 lb
HOOKBLOCKS and HEADACHE BALLS:	
55 ton, 5 sheave	1098 lb+
40 ton, 3 sheave	600 lb+
20 ton, 1 sheave	450 lb+
7 ton headache ball	250 lb+

+ Refer to rating plate for actual weight.

When lifting over boom extension, deduct total weight of all load handling devices reeved over main boom nose directly from boom extension capacity.

NOTE: All load handling devices and boom attachments are considered part of the load and suitable allowances **MUST BE MADE** for their combined weights. Weights are for National Crane furnished equipment.

LINE PULLS AND REEVING INFORMATION

HOISTS	CABLE SPECS.	PERMISSIBLE LINE PULLS	NOMINAL CABLE LENGTH
Main & Aux	5/8" (16mm) 35x7 Class EEIPS, CS Min. breaking strength 56,420 lb	11,280 lb*	498 ft.
Main & Aux	18 mm Synthetic K-100 Hoist Rope (ISO) Min. breaking strength 63,700 lb	12,740 lb*	498 ft.

The approximate weight of 5/8" wire rope is 1.0 lb/ft.

The approximate weight of 18 mm synthetic rope is 0.16 lb/ft.

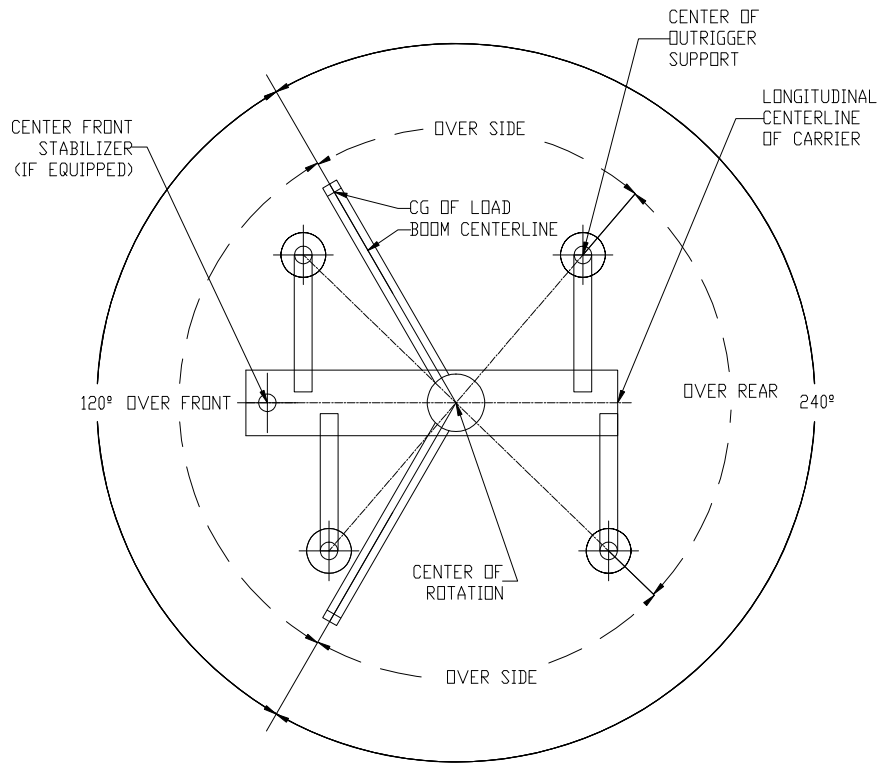
* With certain boom and hoist tackle combinations, the allowable line pull may be limited by hoist performance. Refer to Hoist Performance table for lift planning to ensure adequate hoist performance on drum rope layer required.

Parts of line	1	2	3	4	5	6	7	8	9	10
Max. boom length (ft.) at max. elevation with stated rigging and load block at ground level	196	144	108	84	72	60	48	36.8	36.8	36.8
Low speed lift (lb)	11,280	22,500	33,750	45,000	56,250	67,500	78,750	90,000	100,000	110,000
High speed lift (lb)	5,000	10,000	15,000	20,000	25,000	30,000	35,000	40,000	45,000	50,000

Wire Rope Layer	Hoist Line Pulls		Drum Rope Capacity (ft)	
	Two Speed Hoist			
	Low	High	Layer	Total
	Available lb*	Available lb*		
1	17,250	7,040	78	78
2	15,450	6,310	87	165
3	14,000	5,720	96	261
4	12,790	5,220	105	366
5	11,780	4,810	114	480

Synthetic rope layer height may vary and may reduce available line pull per layer.

* Refer to Line Pulls and Reeving Information table for maximum lifting capacity of wire rope.



BOLD LINES DETERMINE THE LIMITING WORKING POSITION OF ANY LOAD FOR OPERATION WITHIN WORKING AREAS INDICATED

WORKING AREA DIAGRAM

Basket RCL Operating Codes

With 6000 lb counterweight:

- 0051 Basket with no stowed extension
- 0055 Basket with 36' extension stowed
- 0065 Basket with 36' extension at 0° offset

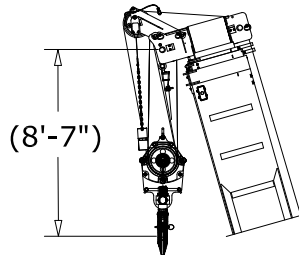
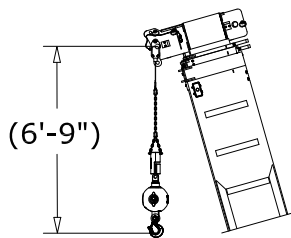
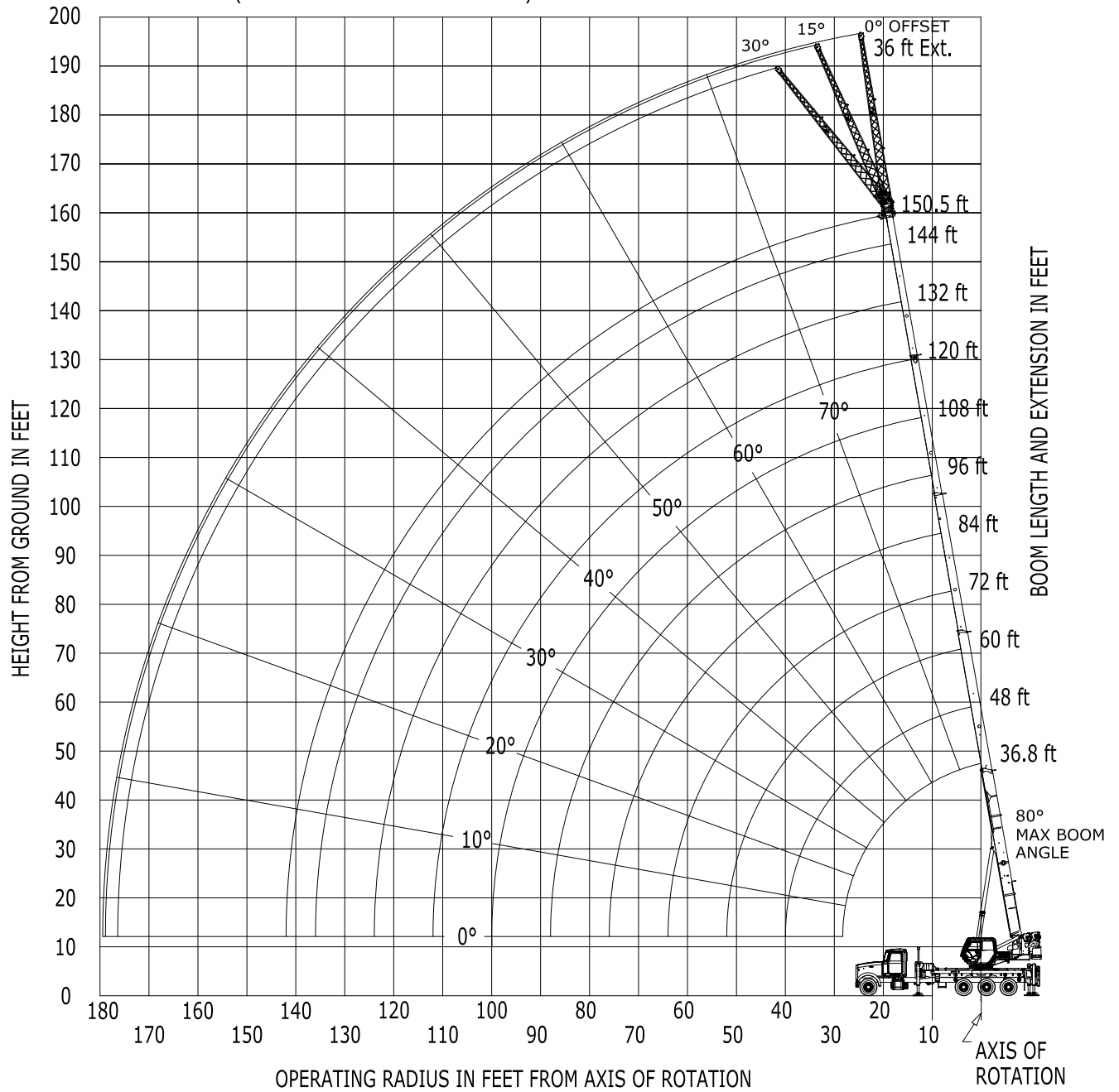
With 3000 lb counterweight:

- 1051 Basket with no stowed extension
- 1055 Basket with 36' extension stowed
- 1065 Basket with 36' extension at 0° offset

With no counterweight:

- 8051 Basket with no stowed extension
- 8055 Basket with 36' extension stowed
- 8065 Basket with 36' extension at 0° offset

GEOMETRIC RANGE DIAGRAM
(BOOM DEFLECTION NOT SHOWN) 80111719



DIMENSIONS ARE FOR LARGEST FURNISHED HOOK BLOCK & HEADACHE BALL, WITH ANTI-TWO BLOCK ACTIVATED.

* THIS DRAWING SHOWS THE PHYSICAL REACH OF THE MACHINE. ALWAYS REFER TO LOAD CHART TO SEE WHICH PORTIONS OF THIS DIAGRAM ARE VALID FOR THE SPECIFIC MACHINE CONFIGURATION AND WHERE THE LOADS ARE STRUCTURALLY OR STABILITY LIMITED.

**RATED LIFTING CAPACITIES IN POUNDS
37 FT. - 151 FT. BOOM
WITH 6,000 LB. COUNTERWEIGHT
ON OUTRIGGERS FULLY EXTENDED - 360°**

Radius in Feet	Main Boom Length in Feet - Code #0001 or #0003 or #0005										
	36.8	48-A	60-B	72-C	84-D	96-E	108-F	120-G	132-H	144-J	150.5
6	110,000 (71.5)	41,500 (76.7)									
8	106,500 (68)	41,500 (74.2)	41,500 (78.2)								
10	93,200 (64.4)	41,500 (71.6)	41,500 (76.2)	41,500 (79.4)							
12	82,600 (60.7)	41,500 (69)	41,500 (74.2)	41,500 (77.8)							
15	70,150 (54.9)	41,500 (64.9)	41,500 (71.1)	41,500 (75.3)	39,700 (78)	33,200 (79.9)					
20	55,100 (43.7)	41,500 (57.8)	41,500 (65.8)	41,500 (71)	36,100 (74.5)	30,250 (77)	23,550 (79.3)				
25	37,200 (28.9)	41,500 (49.9)	41,500 (60.3)	38,150 (66.7)	32,950 (71)	27,400 (74.1)	21,150 (76.7)	18,600 (78.9)			
30		32,650 (40.5)	33,400 (54.3)	33,850 (62.1)	30,250 (67.4)	24,700 (71.1)	19,100 (74.2)	16,950 (76.7)	14,500 (78.4)	11,300 (79.9)	
35		26,200 (28.5)	26,950 (47.6)	27,450 (57.2)	27,700 (63.6)	22,350 (68)	17,250 (71.5)	15,450 (74.3)	13,900 (76.4)	11,300 (78)	10,050 (78.8)
40			21,350 (39.6)	22,600 (52)	22,300 (59.5)	20,300 (64.8)	15,700 (68.8)	14,150 (72)	12,800 (74.3)	11,300 (76.1)	10,050 (77)
45			17,050 (30)	18,300 (46.1)	18,050 (55.3)	17,750 (61.4)	14,350 (66.1)	12,950 (69.6)	11,750 (72.1)	10,700 (74.2)	10,050 (75.2)
50			13,050 (15.5)	14,950 (39.2)	14,800 (50.7)	14,850 (57.8)	13,200 (63)	11,900 (67.1)	10,850 (70)	9,930 (72.3)	9,470 (73.4)
55				12,250 (31.1)	12,250 (45.2)	12,550 (54)	12,150 (59.8)	11,000 (64.4)	10,000 (67.8)	9,200 (70.3)	8,780 (71.5)
60				10,000 (20.4)	10,050 (39.1)	10,650 (49.9)	10,500 (56.5)	10,150 (61.5)	9,300 (65.4)	8,540 (68.3)	8,160 (69.6)
65					8,490 (32)	9,090 (44.8)	8,930 (53)	9,450 (58.5)	8,640 (62.8)	7,940 (66.2)	7,590 (67.7)
70					7,080 (23.3)	7,760 (39.2)	7,610 (48.9)	8,160 (55.4)	7,870 (60.2)	7,380 (63.9)	7,070 (65.6)
75					5,380 (8.2)	6,610 (32.9)	6,490 (44.2)	7,030 (52.1)	6,790 (57.4)	6,550 (61.5)	6,420 (63.4)
80						5,620 (25.4)	5,530 (39.1)	6,030 (48.2)	5,840 (54.6)	5,650 (59.1)	5,740 (61.2)
85						4,750 (15)	4,550 (33.4)	5,140 (43.8)	5,010 (51.6)	4,880 (56.6)	5,100 (58.9)
90							3,850 (26.9)	4,340 (39.1)	4,270 (47.7)	4,200 (54)	4,490 (56.5)
95							3,240 (18.6)	3,630 (34)	3,610 (43.6)	3,590 (51)	3,910 (54)
100								2,980 (28.1)	2,790 (39.2)	2,820 (47.4)	3,360 (51.1)
105								2,380 (21.1)	2,300 (34.5)	2,320 (43.5)	2,830 (47.5)
110								1,840 (10.5)	1,870 (29.2)	1,890 (39.4)	2,320 (43.8)
115									1,480 (23)	1,490 (35)	1,840 (39.8)
120									1,130 (14.8)	1,130 (30.1)	1,370 (35.6)
125										810 (24.6)	930 (31)
130										520 (17.7)	500 (25.7)
Min. boom angle for indicated length (no load)								9.5°	13.8°	16.7°	24.7°
Max. boom length at 0° boom angle (no load)								107.6 ft.			

NOTE: () Boom angles are in degrees.

Boom Angle	Main Boom Length in Feet										
	36.8	48-A	60-B	72-C	84-D	96-E	108-F	120-G	132-H	144-J	150.5
0°	14,400 (28.3)	10,000 (39.5)	6,570 (51.5)	4,360 (63.5)	2,820 (75.5)	1,690 (87.5)	820 (99.5)				

NOTE: () Reference radii in feet.

80114739 V9

Rated Load Reductions from main boom capacity when lifting over main boom nose with:											
26-45' tele. erected (retracted)	2450	2350	2250	2200	2150	2150	2100	2100	2050	2050	2050
26-45' tele. erected (extended)	2800	2600	2450	2350	2300	2250	2200	2200	2150	2150	2150
36' lattice	2000	1850	1750	1700	1650	1600	1600	1550	1550	1550	1500

RATED LIFTING CAPACITIES IN POUNDS
36 FT. FIXED OFFSETABLE BOOM EXTENSION
WITH 6,000 LB. COUNTERWEIGHT
ON OUTRIGGERS FULLY EXTENDED - 360°
36 FT. EXTENSION AT 0° OFFSET ANGLE

Radius in Feet	Main Boom Length in Feet - Code #0015			
	120-G	132-H	144-J	150.5
30	7,720 (78.4)			
35	7,720 (76.9)	6,370 (78.5)	5,060 (79.9)	4,300 (80)
40	7,720 (75.4)	6,370 (77)	5,060 (78.5)	4,300 (78.8)
45	7,720 (73.9)	6,370 (75.6)	5,060 (77.2)	4,300 (77.6)
50	7,670 (72.3)	6,370 (74.1)	5,060 (75.8)	4,300 (76.3)
55	7,260 (70.7)	6,370 (72.7)	5,060 (74.5)	4,300 (75.1)
60	6,880 (69.1)	6,370 (71.2)	5,060 (73.1)	4,300 (73.8)
65	6,520 (67.4)	6,260 (69.7)	5,060 (71.7)	4,300 (72.6)
70	6,180 (65.7)	5,960 (68.1)	5,060 (70.2)	4,300 (71.3)
75	5,870 (64)	5,690 (66.5)	5,060 (68.8)	4,300 (70)
80	5,580 (62.2)	5,400 (64.9)	4,990 (67.3)	4,300 (68.6)
85	5,310 (59.9)	5,060 (63.2)	4,680 (65.7)	4,300 (67.2)
90	4,710 (57.4)	4,590 (61.3)	4,380 (64.2)	4,200 (65.8)
95	4,080 (54.8)	3,960 (59.1)	3,840 (62.6)	3,740 (64.1)
100	3,520 (52.2)	3,400 (56.8)	3,290 (60.6)	3,190 (62.2)
105	3,030 (49.4)	2,910 (54.4)	2,790 (58.5)	2,690 (60.2)
110	2,580 (46.5)	2,460 (51.9)	2,340 (56.3)	2,250 (58.2)
115	2,180 (43.4)	2,060 (49.4)	1,940 (54.1)	1,850 (56.1)
120	1,820 (40.1)	1,700 (46.7)	1,580 (51.8)	1,480 (53.9)
125	1,500 (36.6)	1,370 (43.9)	1,250 (49.5)	1,150 (51.2)
130	1,200 (32.7)	1,070 (40.9)	950 (47)	850 (48.3)
135	930 (27.8)	800 (37.6)	670 (44.4)	580 (45.3)
140	690 (20.9)	550 (34.1)		
Min. boom angle for indicated length (no load)	19.9°	33.1°	43.4°	44.3°
Max. boom length at 0° boom angle (no load)	47.6 ft.	47.6 ft.	47.6 ft.	47.6 ft.

NOTE: () Boom angles are in degrees.

80114808_0 V9

BOOM EXTENSION CAPACITY NOTES:

- 36 ft. extension length may be used for single line lifting service only.
- For boom angles not shown, use the rating of the next lower boom angle.

WARNING: Operation of this machine with heavier loads than the capacities listed is strictly prohibited. Machine tipping with boom extension occurs rapidly and without advance warning.
- Boom angle is the angle above or below horizontal of the longitudinal axis of the boom base section after lifting rated load.
- Capacities listed are with outriggers properly extended and vertical jacks set only.

**RATED LIFTING CAPACITIES IN POUNDS
36 FT. FIXED OFFSETABLE BOOM EXTENSION
WITH 6,000 LB. COUNTERWEIGHT
ON OUTRIGGERS FULLY EXTENDED - 360°
36 FT. EXTENSION AT 15° OFFSET ANGLE**

Radius in Feet	Main Boom Length in Feet - Code #0020			
	120-G	132-H	144-J	150.5
40	7,000 (79)			
45	6,730 (77.5)			
50	6,540 (76.1)	6,400 (77.1)		
55	6,360 (74.6)	6,150 (75.8)	5,590 (76.8)	4,940 (77.3)
60	6,100 (73.1)	5,880 (74.4)	5,590 (75.6)	4,940 (76.1)
65	5,810 (71.6)	5,620 (73.1)	5,370 (74.3)	4,940 (74.9)
70	5,550 (70)	5,380 (71.7)	5,160 (73)	4,940 (73.7)
75	5,300 (68.4)	5,150 (70.2)	4,960 (71.7)	4,840 (72.5)
80	5,070 (66.7)	4,930 (68.7)	4,760 (70.4)	4,660 (71.2)
85	4,860 (64.4)	4,730 (67.2)	4,580 (69)	4,480 (69.9)
90	4,660 (61.9)	4,550 (65.3)	4,400 (67.6)	4,250 (68.6)
95	4,480 (59.3)	4,370 (62.9)	4,150 (66.1)	3,980 (67.2)
100	3,900 (56.7)	3,810 (60.4)	3,720 (63.8)	3,640 (65.5)
105	3,370 (53.9)	3,280 (57.9)	3,190 (61.5)	3,100 (63.2)
110	2,890 (51)	2,800 (55.3)	2,710 (59.1)	2,630 (60.9)
115	2,450 (47.9)	2,370 (52.6)	2,280 (56.6)	2,200 (58.6)
120	2,060 (44.6)	1,970 (49.8)	1,890 (54.1)	1,800 (56.1)
125	1,700 (41.1)	1,620 (46.8)	1,530 (51.4)	1,450 (53.6)
130	1,370 (37.2)	1,290 (43.7)	1,200 (48.7)	1,120 (51)
135	1,070 (31.6)	990 (40.3)	900 (45.8)	820 (48.3)
140	790 (24.1)	710 (36.6)	630 (42.8)	550 (45.5)
Min. boom angle for indicated length (no load)	23.1°	35.6°	41.8°	44.5°
Max. boom length at 0° boom angle (no load)	47.6 ft.	47.6 ft.	47.6 ft.	47.6 ft.

NOTE: () Boom angles are in degrees.

80114808_15 V9

BOOM EXTENSION CAPACITY NOTES:

1. 36 ft. extension length may be used for single line lifting service only.
2. For boom angles not shown, use the rating of the next lower boom angle.
WARNING: Operation of this machine with heavier loads than the capacities listed is strictly prohibited. Machine tipping with boom extension occurs rapidly and without advance warning.
3. Boom angle is the angle above or below horizontal of the longitudinal axis of the boom base section after lifting rated load.
4. Capacities listed are with outriggers properly extended and vertical jacks set only.

**RATED LIFTING CAPACITIES IN POUNDS
36 FT. FIXED OFFSETABLE BOOM EXTENSION
WITH 6,000 LB. COUNTERWEIGHT
ON OUTRIGGERS FULLY EXTENDED - 360°
36 FT. EXTENSION AT 30° OFFSET ANGLE**

Radius in Feet	Main Boom Length in Feet - Code #0025			
	120-G	132-H	144-J	150.5
50	5,660 (78.8)			
55	5,530 (77.3)	5,440 (78.4)		
60	5,420 (75.7)	5,350 (77)	5,190 (78.1)	
65	5,320 (74.1)	5,190 (75.6)	5,000 (76.8)	4,870 (77.4)
70	5,140 (72.5)	4,990 (74.1)	4,810 (75.5)	4,700 (76.2)
75	4,940 (70.8)	4,800 (72.6)	4,640 (74.2)	4,540 (74.9)
80	4,760 (68.8)	4,630 (71.1)	4,470 (72.8)	4,380 (73.6)
85	4,580 (66.1)	4,460 (69.5)	4,320 (71.4)	4,230 (72.3)
90	4,420 (63.4)	4,310 (67.2)	4,170 (70)	4,090 (71)
95	4,270 (60.6)	4,160 (64.6)	4,030 (68.1)	3,960 (69.6)
100	4,130 (57.7)	4,020 (62)	3,900 (65.7)	3,820 (67.5)
105	3,630 (54.6)	3,580 (59.3)	3,520 (63.3)	3,450 (65.2)
110	3,120 (51.5)	3,070 (56.5)	3,010 (60.8)	2,940 (62.8)
115	2,650 (48.1)	2,600 (53.6)	2,540 (58.2)	2,480 (60.4)
120	2,230 (44.5)	2,180 (50.6)	2,120 (55.5)	2,060 (57.8)
125	1,830 (40.6)	1,800 (47.4)	1,740 (52.8)	1,680 (55.2)
130	1,470 (36)	1,440 (44)	1,390 (49.9)	1,330 (52.5)
135		1,110 (40.4)	1,070 (46.8)	1,000 (49.7)
140		810 (36.3)	770 (43.6)	700 (46.8)
Min. boom angle for indicated length (no load)	35°	35.3°	42.6°	45.8°
Max. boom length at 0° boom angle (no load)	47.6 ft.	47.6 ft.	47.6 ft.	47.6 ft.

NOTE: () Boom angles are in degrees.

80114808_30 V9

BOOM EXTENSION CAPACITY NOTES:

1. 36 ft. extension length may be used for single line lifting service only.
 2. For boom angles not shown, use the rating of the next lower boom angle.
- WARNING:** Operation of this machine with heavier loads than the capacities listed is strictly prohibited. Machine tipping with boom extension occurs rapidly and without advance warning.
3. Boom angle is the angle above or below horizontal of the longitudinal axis of the boom base section after lifting rated load.
 4. Capacities listed are with outriggers properly extended and vertical jacks set only.

**RATED LIFTING CAPACITIES IN POUNDS
37 FT. - 151 FT. BOOM
WITH 6,000 LB. COUNTERWEIGHT
ON OUTRIGGERS FULLY EXTENDED - OVER REAR**

Radius in Feet	Main Boom Length in Feet - Code #0026 or #0028 or #0030										
	36.8	48-A	60-B	72-C	84-D	96-E	108-F	120-G	132-H	144-J	150.5
6	110,000 (71.5)	41,500 (76.7)									
8	106,500 (68)	41,500 (74.2)	41,500 (78.2)								
10	96,050 (64.4)	41,500 (71.6)	41,500 (76.2)	41,500 (79.4)							
12	87,300 (60.7)	41,500 (69)	41,500 (74.2)	41,500 (77.8)							
15	75,400 (54.9)	41,500 (64.9)	41,500 (71.1)	41,500 (75.3)	39,700 (78)	33,200 (79.9)					
20	57,600 (43.7)	41,500 (57.8)	41,500 (65.8)	41,500 (71)	36,100 (74.5)	30,250 (77)	23,550 (79.3)				
25	37,200 (28.9)	41,500 (49.9)	41,500 (60.3)	38,150 (66.7)	32,950 (71)	27,400 (74.1)	21,150 (76.7)	18,600 (78.9)			
30		35,300 (40.5)	36,050 (54.3)	34,950 (62.1)	30,250 (67.4)	24,700 (71.1)	19,100 (74.2)	16,950 (76.7)	14,500 (78.4)	11,300 (79.9)	
35		27,200 (28.5)	29,450 (47.6)	29,500 (57.2)	27,950 (63.6)	22,350 (68)	17,250 (71.5)	15,450 (74.3)	13,900 (76.4)	11,300 (78)	10,050 (78.8)
40			23,700 (39.6)	24,300 (52)	24,450 (59.5)	20,300 (64.8)	15,700 (68.8)	14,150 (72)	12,800 (74.3)	11,300 (76.1)	10,050 (77)
45			19,250 (30)	20,200 (46.1)	20,050 (55.3)	18,600 (61.4)	14,350 (66.1)	12,950 (69.6)	11,750 (72.1)	10,700 (74.2)	10,050 (75.2)
50			13,050 (15.5)	16,850 (39.2)	16,650 (50.7)	17,100 (57.8)	13,200 (63)	11,900 (67.1)	10,850 (70)	9,930 (72.3)	9,470 (73.4)
55				14,100 (31.1)	14,250 (45.2)	14,900 (54)	12,150 (59.8)	11,000 (64.4)	10,000 (67.8)	9,200 (70.3)	8,780 (71.5)
60				11,750 (20.4)	12,050 (39.1)	12,800 (49.9)	11,250 (56.5)	10,150 (61.5)	9,300 (65.4)	8,540 (68.3)	8,160 (69.6)
65					10,250 (32)	11,050 (44.8)	10,450 (53)	9,460 (58.5)	8,640 (62.8)	7,940 (66.2)	7,590 (67.7)
70					8,720 (23.3)	9,610 (39.2)	9,760 (48.9)	8,800 (55.4)	8,030 (60.2)	7,380 (63.9)	7,070 (65.6)
75					5,380 (8.2)	8,330 (32.9)	8,480 (44.2)	8,210 (52.1)	7,460 (57.4)	6,840 (61.5)	6,550 (63.4)
80						7,230 (25.4)	7,350 (39.1)	7,570 (48.2)	6,840 (54.6)	6,260 (59.1)	5,980 (61.2)
85						5,920 (15)	5,970 (33.4)	6,630 (43.8)	6,290 (51.6)	5,720 (56.6)	5,460 (58.9)
90							5,190 (26.9)	5,770 (39.1)	5,560 (47.7)	5,240 (54)	4,990 (56.5)
95							4,520 (18.6)	4,970 (34)	4,820 (43.6)	4,670 (51)	4,550 (54)
100								4,220 (28.1)	4,140 (39.2)	4,060 (47.4)	4,110 (51.1)
105								3,520 (21.1)	3,510 (34.5)	3,500 (43.5)	3,690 (47.5)
110								2,430 (10.5)	2,940 (29.2)	2,990 (39.4)	3,260 (43.8)
115									2,400 (23)	2,540 (35)	2,820 (39.8)
120									1,910 (14.8)	2,120 (30.1)	2,380 (35.6)
125										1,730 (24.6)	1,960 (31)
130										1,380 (17.7)	1,550 (25.7)
135											1,140 (19.5)
140											720 (10.5)
Min. boom angle for indicated length (no load)								9.5°	9.5°	9.5°	9.5°
Max. boom length at 0° boom angle (no load)								107.6 ft.			

NOTE: () Boom angles are in degrees.

Boom Angle	Main Boom Length in Feet										
	36.8	48-A	60-B	72-C	84-D	96-E	108-F	120-G	132-H	144-J	150.5
0°	14,400 (28.3)	10,000 (39.5)	6,570 (51.5)	4,360 (63.5)	2,820 (75.5)	1,690 (87.5)	820 (99.5)				

NOTE: () Reference radii in feet.

80114740 V9

Rated Load Reductions from main boom capacity when lifting over main boom nose with:											
26-45' tele. erected (retracted)	2450	2350	2250	2200	2150	2150	2100	2100	2050	2050	2050
26-45' tele. erected (extended)	2800	2600	2450	2350	2300	2250	2200	2200	2150	2150	2150
36' lattice	2000	1850	1750	1700	1650	1600	1600	1550	1550	1550	1500

RATED LIFTING CAPACITIES IN POUNDS
36 FT. FIXED OFFSETABLE BOOM EXTENSION
WITH 6,000 LB. COUNTERWEIGHT
ON OUTRIGGERS FULLY EXTENDED - OVER REAR
36 FT. EXTENSION AT 0° OFFSET ANGLE

Radius in Feet	Main Boom Length in Feet - Code #0040			
	120-G	132-H	144-J	150.5
30	7,720 (78.4)			
35	7,720 (76.9)	6,370 (78.5)	5,060 (79.9)	4,300 (80)
40	7,720 (75.4)	6,370 (77)	5,060 (78.5)	4,300 (78.8)
45	7,720 (73.9)	6,370 (75.6)	5,060 (77.2)	4,300 (77.6)
50	7,670 (72.3)	6,370 (74.1)	5,060 (75.8)	4,300 (76.3)
55	7,260 (70.7)	6,370 (72.7)	5,060 (74.5)	4,300 (75.1)
60	6,880 (69.1)	6,370 (71.2)	5,060 (73.1)	4,300 (73.8)
65	6,520 (67.4)	6,260 (69.7)	5,060 (71.7)	4,300 (72.6)
70	6,180 (65.7)	5,960 (68.1)	5,060 (70.2)	4,300 (71.3)
75	5,870 (64)	5,690 (66.5)	5,060 (68.8)	4,300 (70)
80	5,580 (62.2)	5,400 (64.9)	4,990 (67.3)	4,300 (68.6)
85	5,310 (59.9)	5,060 (63.2)	4,680 (65.7)	4,300 (67.2)
90	5,070 (57.4)	4,750 (61.3)	4,380 (64.2)	4,200 (65.8)
95	4,830 (54.8)	4,450 (59.1)	4,100 (62.6)	3,930 (64.1)
100	4,540 (52.2)	4,170 (56.8)	3,840 (60.6)	3,670 (62.2)
105	4,140 (49.4)	3,920 (54.4)	3,600 (58.5)	3,380 (60.2)
110	3,650 (46.5)	3,530 (51.9)	3,370 (56.3)	3,020 (58.2)
115	3,210 (43.4)	3,080 (49.4)	2,970 (54.1)	2,690 (56.1)
120	2,800 (40.1)	2,680 (46.7)	2,560 (51.8)	2,390 (53.9)
125	2,440 (36.6)	2,310 (43.9)	2,200 (49.5)	2,100 (51.2)
130	2,110 (32.7)	1,980 (40.9)	1,860 (47)	1,760 (48.3)
135	1,810 (27.8)	1,670 (37.6)	1,550 (44.4)	1,460 (45.3)
140	1,530 (20.9)	1,390 (34.1)	1,270 (41.6)	1,170 (42.2)
145	1,290 (12)	1,140 (29.8)	1,010 (38.6)	910 (39)
150		900 (23.4)	770 (35.4)	670 (35.6)
155		690 (15.7)	550 (31.8)	
Min. boom angle for indicated length (no load)	11°	14.7°	30.8°	34.6°
Max. boom length at 0° boom angle (no load)	47.6 ft.	47.6 ft.	47.6 ft.	47.6 ft.

NOTE: () Boom angles are in degrees.

80114809_0 V9

BOOM EXTENSION CAPACITY NOTES:

1. 36 ft. extension length may be used for single line lifting service only.
 2. For boom angles not shown, use the rating of the next lower boom angle.
- WARNING:** Operation of this machine with heavier loads than the capacities listed is strictly prohibited. Machine tipping with boom extension occurs rapidly and without advance warning.
3. Boom angle is the angle above or below horizontal of the longitudinal axis of the boom base section after lifting rated load.
 4. Capacities listed are with outriggers properly extended and vertical jacks set only.

**RATED LIFTING CAPACITIES IN POUNDS
36 FT. FIXED OFFSETABLE BOOM EXTENSION
WITH 6,000 LB. COUNTERWEIGHT
ON OUTRIGGERS FULLY EXTENDED - OVER REAR
36 FT. EXTENSION AT 15° OFFSET ANGLE**

Radius in Feet	Main Boom Length in Feet - Code #0045			
	120-G	132-H	144-J	150.5
40	7,000 (79)			
45	6,730 (77.5)			
50	6,540 (76.1)	6,400 (77.1)		
55	6,360 (74.6)	6,150 (75.8)	5,590 (76.8)	4,940 (77.3)
60	6,100 (73.1)	5,880 (74.4)	5,590 (75.6)	4,940 (76.1)
65	5,810 (71.6)	5,620 (73.1)	5,370 (74.3)	4,940 (74.9)
70	5,550 (70)	5,380 (71.7)	5,160 (73)	4,940 (73.7)
75	5,300 (68.4)	5,150 (70.2)	4,960 (71.7)	4,840 (72.5)
80	5,070 (66.7)	4,930 (68.7)	4,760 (70.4)	4,660 (71.2)
85	4,860 (64.4)	4,730 (67.2)	4,580 (69)	4,480 (69.9)
90	4,660 (61.9)	4,550 (65.3)	4,400 (67.6)	4,250 (68.6)
95	4,480 (59.3)	4,370 (62.9)	4,150 (66.1)	3,980 (67.2)
100	4,310 (56.7)	4,200 (60.4)	3,890 (63.8)	3,730 (65.5)
105	4,150 (53.9)	3,950 (57.9)	3,650 (61.5)	3,500 (63.2)
110	3,950 (51)	3,710 (55.3)	3,420 (59.1)	3,240 (60.9)
115	3,470 (47.9)	3,390 (52.6)	3,200 (56.6)	2,900 (58.6)
120	3,040 (44.6)	2,950 (49.8)	2,870 (54.1)	2,580 (56.1)
125	2,640 (41.1)	2,560 (46.8)	2,470 (51.4)	2,290 (53.6)
130	2,280 (37.2)	2,200 (43.7)	2,110 (48.7)	2,020 (51)
135	1,940 (31.6)	1,860 (40.3)	1,780 (45.8)	1,700 (48.3)
140	1,630 (24.1)	1,550 (36.6)	1,470 (42.8)	1,390 (45.5)
145		1,270 (31.9)	1,190 (39.5)	1,110 (42.5)
150		1,010 (25.4)	920 (36)	850 (39.4)
155		760 (17.5)	680 (31.9)	600 (36)
Min. boom angle for indicated length (no load)	16.5°	16.5°	30.9°	35°
Max. boom length at 0° boom angle (no load)	47.6 ft.	47.6 ft.	47.6 ft.	47.6 ft.

NOTE: () Boom angles are in degrees.

80114809_15 V9

BOOM EXTENSION CAPACITY NOTES:

1. 36 ft. extension length may be used for single line lifting service only.
2. For boom angles not shown, use the rating of the next lower boom angle.
WARNING: Operation of this machine with heavier loads than the capacities listed is strictly prohibited. Machine tipping with boom extension occurs rapidly and without advance warning.
3. Boom angle is the angle above or below horizontal of the longitudinal axis of the boom base section after lifting rated load.
4. Capacities listed are with outriggers properly extended and vertical jacks set only.

**RATED LIFTING CAPACITIES IN POUNDS
36 FT. FIXED OFFSETABLE BOOM EXTENSION
WITH 6,000 LB. COUNTERWEIGHT
ON OUTRIGGERS FULLY EXTENDED - OVER REAR
36 FT. EXTENSION AT 30° OFFSET ANGLE**

Radius in Feet	Main Boom Length in Feet - Code #0050			
	120-G	132-H	144-J	150.5
50	5,660 (78.8)			
55	5,530 (77.3)	5,440 (78.4)		
60	5,420 (75.7)	5,350 (77)	5,190 (78.1)	
65	5,320 (74.1)	5,190 (75.6)	5,000 (76.8)	4,870 (77.4)
70	5,140 (72.5)	4,990 (74.1)	4,810 (75.5)	4,700 (76.2)
75	4,940 (70.8)	4,800 (72.6)	4,640 (74.2)	4,540 (74.9)
80	4,760 (68.8)	4,630 (71.1)	4,470 (72.8)	4,380 (73.6)
85	4,580 (66.1)	4,460 (69.5)	4,320 (71.4)	4,230 (72.3)
90	4,420 (63.4)	4,310 (67.2)	4,170 (70)	4,090 (71)
95	4,270 (60.6)	4,160 (64.6)	4,030 (68.1)	3,960 (69.6)
100	4,130 (57.7)	4,020 (62)	3,900 (65.7)	3,820 (67.5)
105	4,010 (54.6)	3,900 (59.3)	3,730 (63.3)	3,580 (65.2)
110	3,890 (51.5)	3,780 (56.5)	3,500 (60.8)	3,360 (62.8)
115	3,670 (48.1)	3,550 (53.6)	3,280 (58.2)	3,060 (60.4)
120	3,200 (44.5)	3,160 (50.6)	3,070 (55.5)	2,730 (57.8)
125	2,770 (40.6)	2,730 (47.4)	2,680 (52.8)	2,430 (55.2)
130	2,380 (36)	2,340 (44)	2,290 (49.9)	2,140 (52.5)
135		1,980 (40.4)	1,940 (46.8)	1,880 (49.7)
140		1,650 (36.3)	1,610 (43.6)	1,550 (46.8)
145			1,300 (40.2)	1,240 (43.7)
150			1,010 (36.4)	960 (40.4)
155				690 (36.8)
Min. boom angle for indicated length (no load)	35°	35.3°	35.4°	35.8°
Max. boom length at 0° boom angle (no load)	47.6 ft.	47.6 ft.	47.6 ft.	47.6 ft.

NOTE: () Boom angles are in degrees.

80114809_30 V9

BOOM EXTENSION CAPACITY NOTES:

1. 36 ft. extension length may be used for single line lifting service only.
2. For boom angles not shown, use the rating of the next lower boom angle.
WARNING: Operation of this machine with heavier loads than the capacities listed is strictly prohibited. Machine tipping with boom extension occurs rapidly and without advance warning.
3. Boom angle is the angle above or below horizontal of the longitudinal axis of the boom base section after lifting rated load.
4. Capacities listed are with outriggers properly extended and vertical jacks set only.

RATED LIFTING CAPACITIES IN POUNDS

37 FT. - 151 FT. BOOM

WITH 6,000 LB. COUNTERWEIGHT

ON OUTRIGGERS 75% EXTENDED - 360°

Radius in Feet	Main Boom Length in Feet - Code #0201 or #0203 or #0205										
	36.8	48-A	60-B	72-C	84-D	96-E	108-F	120-G	132-H	144-J	150.5
6	110,000 (71.5)	41,500 (76.7)									
8	98,250 (68)	41,500 (74.2)	41,500 (78.2)								
10	85,650 (64.4)	41,500 (71.6)	41,500 (76.2)	41,500 (79.4)							
12	75,650 (60.7)	41,500 (69)	41,500 (74.2)	41,500 (77.8)							
15	64,000 (54.9)	41,500 (64.9)	41,500 (71.1)	41,500 (75.3)	39,700 (78)	33,200 (79.9)					
20	47,050 (43.7)	41,500 (57.8)	41,500 (65.8)	41,500 (71)	36,100 (74.5)	30,250 (77)	23,550 (79.3)				
25	34,000 (28.9)	34,950 (49.9)	34,950 (60.3)	33,800 (66.7)	32,650 (71)	27,400 (74.1)	21,150 (76.7)	18,600 (78.9)			
30		24,400 (40.5)	24,950 (54.3)	25,300 (62.1)	24,600 (67.4)	23,950 (71.1)	19,100 (74.2)	16,950 (76.7)	14,500 (78.4)	11,300 (79.9)	
35		18,050 (28.5)	18,600 (47.6)	18,900 (57.2)	19,100 (63.6)	18,850 (68)	17,250 (71.5)	15,450 (74.3)	13,900 (76.4)	11,300 (78)	10,050 (78.8)
40			14,300 (39.6)	14,600 (52)	14,750 (59.5)	14,900 (64.8)	14,800 (68.8)	14,150 (72)	12,800 (74.3)	11,300 (76.1)	10,050 (77)
45			11,200 (30)	11,500 (46.1)	11,650 (55.3)	11,800 (61.4)	11,850 (66.1)	11,900 (69.6)	11,650 (72.1)	10,700 (74.2)	10,050 (75.2)
50			8,880 (15.5)	9,260 (39.2)	9,430 (50.7)	9,570 (57.8)	9,660 (63)	9,730 (67.1)	9,690 (70)	9,490 (72.3)	9,320 (73.4)
55				7,440 (31.1)	7,620 (45.2)	7,750 (54)	7,830 (59.8)	7,910 (64.4)	7,960 (67.8)	7,910 (70.3)	7,760 (71.5)
60				5,950 (20.4)	6,170 (39.1)	6,300 (49.9)	6,380 (56.5)	6,450 (61.5)	6,500 (65.4)	6,520 (68.3)	6,480 (69.6)
65					4,980 (32)	5,110 (44.8)	5,180 (53)	5,250 (58.5)	5,300 (62.8)	5,320 (66.2)	5,280 (67.7)
70					3,960 (23.3)	4,120 (39.2)	4,190 (48.9)	4,260 (55.4)	4,300 (60.2)	4,330 (63.9)	4,280 (65.6)
75					3,110 (8.2)	3,280 (32.9)	3,350 (44.2)	3,420 (52.1)	3,460 (57.4)	3,480 (61.5)	3,440 (63.4)
80						2,540 (25.4)	2,640 (39.1)	2,700 (48.2)	2,740 (54.6)	2,760 (59.1)	2,720 (61.2)
85						1,910 (15)	2,010 (33.4)	2,070 (43.8)	2,110 (51.6)	2,130 (56.6)	2,090 (58.9)
90							1,450 (26.9)	1,530 (39.1)	1,570 (47.7)	1,590 (54)	1,540 (56.5)
95							960 (18.6)	1,050 (34)	1,090 (43.6)	1,110 (51)	1,060 (54)
100								610 (28.1)	660 (39.2)	680 (47.4)	640 (51.1)
Min. boom angle for indicated length (no load)								27.1°	38.2°	46.4°	50.1°
Max. boom length at 0° boom angle (no load)								107.6 ft.			

NOTE: () Boom angles are in degrees.

Boom Angle	Main Boom Length in Feet										
	36.8	48-A	60-B	72-C	84-D	96-E	108-F	120-G	132-H	144-J	150.5
0°	14,400 (28.3)	10,000 (39.5)	6,570 (51.5)	4,360 (63.5)	2,820 (75.5)	1,640 (87.5)	590 (99.5)				

NOTE: () Reference radii in feet.

80114741 V9

Rated Load Reductions from main boom capacity when lifting over main boom nose with:											
26-45' tele. erected (retracted)	2450	2350	2250	2200	2150	2150	2100	2100	2050	2050	2050
26-45' tele. erected (extended)	2800	2600	2450	2350	2300	2250	2200	2200	2150	2150	2150
36' lattice	2000	1850	1750	1700	1650	1600	1600	1550	1550	1550	1500

**RATED LIFTING CAPACITIES IN POUNDS
36 FT. FIXED OFFSETABLE BOOM EXTENSION
WITH 6,000 LB. COUNTERWEIGHT
ON OUTRIGGERS 75% EXTENDED - 360°
36 FT. EXTENSION AT 0° OFFSET ANGLE**

Radius in Feet	Main Boom Length in Feet - Code #0215			
	120-G	132-H	144-J	150.5
30	7,720 (78.4)			
35	7,720 (76.9)	6,370 (78.5)	5,060 (79.9)	4,300 (80)
40	7,720 (75.4)	6,370 (77)	5,060 (78.5)	4,300 (78.8)
45	7,720 (73.9)	6,370 (75.6)	5,060 (77.2)	4,300 (77.6)
50	7,670 (72.3)	6,370 (74.1)	5,060 (75.8)	4,300 (76.3)
55	7,260 (70.7)	6,370 (72.7)	5,060 (74.5)	4,300 (75.1)
60	6,880 (69.1)	6,370 (71.2)	5,060 (73.1)	4,300 (73.8)
65	6,070 (67.4)	5,950 (69.7)	5,060 (71.7)	4,300 (72.6)
70	5,070 (65.7)	4,940 (68.1)	4,830 (70.2)	4,300 (71.3)
75	4,210 (64)	4,090 (66.5)	3,980 (68.8)	3,870 (70)
80	3,480 (62.2)	3,360 (64.9)	3,250 (67.3)	3,150 (68.6)
85	2,850 (59.9)	2,730 (63.2)	2,620 (65.7)	2,520 (67.2)
90	2,300 (57.4)	2,180 (61.3)	2,070 (64.2)	1,970 (65.8)
95	1,820 (54.8)	1,700 (59.1)	1,580 (62.6)	1,480 (64.1)
100	1,390 (52.2)	1,270 (56.8)	1,150 (60.6)	1,050 (62.2)
105	1,000 (49.4)	880 (54.4)	770 (58.5)	670 (60.2)
110	660 (46.5)	540 (51.9)		
Min. boom angle for indicated length (no load)	45.5°	50.9°	57.5°	59.2°
Max. boom length at 0° boom angle (no load)	47.6 ft.	47.6 ft.	47.6 ft.	47.6 ft.

NOTE: () Boom angles are in degrees.

80114810_0 V9

BOOM EXTENSION CAPACITY NOTES:

1. 36 ft. extension length may be used for single line lifting service only.
2. For boom angles not shown, use the rating of the next lower boom angle.

WARNING: Operation of this machine with heavier loads than the capacities listed is strictly prohibited. Machine tipping with boom extension occurs rapidly and without advance warning.
3. Boom angle is the angle above or below horizontal of the longitudinal axis of the boom base section after lifting rated load.
4. Capacities listed are with outriggers properly extended and vertical jacks set only.

**RATED LIFTING CAPACITIES IN POUNDS
36 FT. FIXED OFFSETABLE BOOM EXTENSION
WITH 6,000 LB. COUNTERWEIGHT
ON OUTRIGGERS 75% EXTENDED - 360°
36 FT. EXTENSION AT 15° OFFSET ANGLE**

Radius in Feet	Main Boom Length in Feet - Code #0220			
	120-G	132-H	144-J	150.5
40	7,000 (79)			
45	6,730 (77.5)			
50	6,540 (76.1)	6,400 (77.1)		
55	6,360 (74.6)	6,150 (75.8)	5,590 (76.8)	4,940 (77.3)
60	6,100 (73.1)	5,880 (74.4)	5,590 (75.6)	4,940 (76.1)
65	5,810 (71.6)	5,620 (73.1)	5,370 (74.3)	4,940 (74.9)
70	5,550 (70)	5,380 (71.7)	5,160 (73)	4,940 (73.7)
75	4,830 (68.4)	4,740 (70.2)	4,640 (71.7)	4,560 (72.5)
80	4,040 (66.7)	3,950 (68.7)	3,860 (70.4)	3,770 (71.2)
85	3,360 (64.4)	3,270 (67.2)	3,180 (69)	3,090 (69.9)
90	2,760 (61.9)	2,670 (65.3)	2,580 (67.6)	2,490 (68.6)
95	2,230 (59.3)	2,140 (62.9)	2,050 (66.1)	1,970 (67.2)
100	1,760 (56.7)	1,670 (60.4)	1,580 (63.8)	1,500 (65.5)
105	1,340 (53.9)	1,250 (57.9)	1,160 (61.5)	1,080 (63.2)
110	960 (51)	880 (55.3)	790 (59.1)	710 (60.9)
115	620 (47.9)	530 (52.6)		
Min. boom angle for indicated length (no load)	46.9°	51.6°	58.1°	59.9°
Max. boom length at 0° boom angle (no load)	47.6 ft.	47.6 ft.	47.6 ft.	47.6 ft.

NOTE: () Boom angles are in degrees.

80114810_15 V9

BOOM EXTENSION CAPACITY NOTES:

1. 36 ft. extension length may be used for single line lifting service only.
 2. For boom angles not shown, use the rating of the next lower boom angle.
- WARNING:** Operation of this machine with heavier loads than the capacities listed is strictly prohibited. Machine tipping with boom extension occurs rapidly and without advance warning.
3. Boom angle is the angle above or below horizontal of the longitudinal axis of the boom base section after lifting rated load.
 4. Capacities listed are with outriggers properly extended and vertical jacks set only.

**RATED LIFTING CAPACITIES IN POUNDS
36 FT. FIXED OFFSETABLE BOOM EXTENSION
WITH 6,000 LB. COUNTERWEIGHT
ON OUTRIGGERS 75% EXTENDED - 360°
36 FT. EXTENSION AT 30° OFFSET ANGLE**

Radius in Feet	Main Boom Length in Feet - Code #0225			
	120-G	132-H	144-J	150.5
50	5,660 (78.8)			
55	5,530 (77.3)	5,440 (78.4)		
60	5,420 (75.7)	5,350 (77)	5,190 (78.1)	
65	5,320 (74.1)	5,190 (75.6)	5,000 (76.8)	4,870 (77.4)
70	5,140 (72.5)	4,990 (74.1)	4,810 (75.5)	4,700 (76.2)
75	4,940 (70.8)	4,800 (72.6)	4,640 (74.2)	4,540 (74.9)
80	4,530 (68.8)	4,460 (71.1)	4,390 (72.8)	4,320 (73.6)
85	3,790 (66.1)	3,730 (69.5)	3,660 (71.4)	3,590 (72.3)
90	3,150 (63.4)	3,080 (67.2)	3,020 (70)	2,950 (71)
95	2,570 (60.6)	2,520 (64.6)	2,450 (68.1)	2,380 (69.6)
100	2,070 (57.7)	2,010 (62)	1,940 (65.7)	1,880 (67.5)
105	1,610 (54.6)	1,550 (59.3)	1,490 (63.3)	1,420 (65.2)
110	1,190 (51.5)	1,140 (56.5)	1,080 (60.8)	1,020 (62.8)
115	820 (48.1)	770 (53.6)	710 (58.2)	650 (60.4)
Min. boom angle for indicated length (no load)	47.1°	52.6°	57.2°	59.4°
Max. boom length at 0° boom angle (no load)	47.6 ft.	47.6 ft.	47.6 ft.	47.6 ft.

NOTE: () Boom angles are in degrees.

80114810_30 V9

BOOM EXTENSION CAPACITY NOTES:

1. 36 ft. extension length may be used for single line lifting service only.
2. For boom angles not shown, use the rating of the next lower boom angle.
WARNING: Operation of this machine with heavier loads than the capacities listed is strictly prohibited. Machine tipping with boom extension occurs rapidly and without advance warning.
3. Boom angle is the angle above or below horizontal of the longitudinal axis of the boom base section after lifting rated load.
4. Capacities listed are with outriggers properly extended and vertical jacks set only.

RATED LIFTING CAPACITIES IN POUNDS

37 FT. - 151 FT. BOOM

WITH 6,000 LB. COUNTERWEIGHT

ON OUTRIGGERS 50% EXTENDED - 360°

Radius in Feet	Main Boom Length in Feet - Code #0401 or #0403 or #0405											
	36.8	48-A	60-B	72-C	84-D	96-E	108-F	120-G	132-H	144-J	150.5	
6	110,000 (71.5)	41,500 (76.7)										
8	106,500 (68)	41,500 (74.2)	41,500 (78.2)									
10	93,200 (64.4)	41,500 (71.6)	41,500 (76.2)	41,500 (79.4)								
12	82,250 (60.7)	41,500 (69)	41,500 (74.2)	41,500 (77.8)								
15	61,950 (54.9)	41,500 (64.9)	41,500 (71.1)	41,500 (75.3)	39,700 (78)	33,200 (79.9)						
20	36,500 (43.7)	36,300 (57.8)	34,950 (65.8)	33,600 (71)	32,250 (74.5)	30,250 (77)	23,550 (79.3)					
25	23,250 (28.9)	24,300 (49.9)	24,650 (60.3)	23,950 (66.7)	23,200 (71)	22,500 (74.1)	21,150 (76.7)	18,600 (78.9)				
30		17,100 (40.5)	17,650 (54.3)	17,950 (62.1)	17,500 (67.4)	17,050 (71.1)	16,600 (74.2)	16,150 (76.7)	14,500 (78.4)	11,300 (79.9)		
35			12,400 (28.5)	13,050 (47.6)	13,350 (57.2)	13,500 (63.6)	13,300 (68)	13,000 (71.5)	12,700 (74.3)	12,350 (76.4)	11,300 (78)	10,050 (78.8)
40				9,910 (39.6)	10,200 (52)	10,400 (59.5)	10,550 (64.8)	10,300 (68.8)	10,100 (72)	9,890 (74.3)	9,650 (76.1)	9,460 (77)
45				7,510 (30)	7,900 (46.1)	8,070 (55.3)	8,210 (61.4)	8,280 (66.1)	8,130 (69.6)	7,960 (72.1)	7,780 (74.2)	7,610 (75.2)
50				5,690 (15.5)	6,090 (39.2)	6,290 (50.7)	6,420 (57.8)	6,500 (63)	6,550 (67.1)	6,420 (70)	6,270 (72.3)	6,130 (73.4)
55					4,650 (31.1)	4,880 (45.2)	5,010 (54)	5,090 (59.8)	5,160 (64.4)	5,160 (67.8)	5,040 (70.3)	4,920 (71.5)
60					3,480 (20.4)	3,720 (39.1)	3,880 (49.9)	3,950 (56.5)	4,020 (61.5)	4,070 (65.4)	4,020 (68.3)	3,900 (69.6)
65						2,760 (32)	2,940 (44.8)	3,010 (53)	3,080 (58.5)	3,120 (62.8)	3,150 (66.2)	3,050 (67.7)
70						1,950 (23.3)	2,130 (39.2)	2,220 (48.9)	2,290 (55.4)	2,330 (60.2)	2,360 (63.9)	2,310 (65.6)
75						1,280 (8.2)	1,440 (32.9)	1,560 (44.2)	1,620 (52.1)	1,660 (57.4)	1,680 (61.5)	1,640 (63.4)
80							850 (25.4)	960 (39.1)	1,040 (48.2)	1,090 (54.6)	1,110 (59.1)	1,060 (61.2)
85									540 (43.8)	580 (51.6)	600 (56.6)	560 (58.9)
Min. boom angle for indicated length (no load)						24.4°	38.1°	42.8°	50.6°	55.6°	57.9°	
Max. boom length at 0° boom angle (no load)						83.6 ft.						

NOTE: () Boom angles are in degrees.

Boom Angle	Main Boom Length in Feet										
	36.8	48-A	60-B	72-C	84-D	96-E	108-F	120-G	132-H	144-J	150.5
0°	14,400 (28.3)	9,480 (39.5)	5,230 (51.5)	2,810 (63.5)	1,220 (75.5)						

NOTE: () Reference radii in feet.

80114742 V9

Rated Load Reductions from main boom capacity when lifting over main boom nose with:											
26-45' tele. erected (retracted)	2450	2350	2250	2200	2150	2150	2100	2100	2050	2050	2050
26-45' tele. erected (extended)	2800	2600	2450	2350	2300	2250	2200	2200	2150	2150	2150
36' lattice	2000	1850	1750	1700	1650	1600	1600	1550	1550	1550	1500

**RATED LIFTING CAPACITIES IN POUNDS
36 FT. FIXED OFFSETABLE BOOM EXTENSION
WITH 6,000 LB. COUNTERWEIGHT
ON OUTRIGGERS 50% EXTENDED - 360°
36 FT. EXTENSION AT 0° OFFSET ANGLE**

Radius in Feet	Main Boom Length in Feet - Code #0415			
	120-G	132-H	144-J	150.5
30	7,720 (78.4)			
35	7,720 (76.9)	6,370 (78.5)	5,060 (79.9)	4,300 (80)
40	7,720 (75.4)	6,370 (77)	5,060 (78.5)	4,300 (78.8)
45	7,720 (73.9)	6,370 (75.6)	5,060 (77.2)	4,300 (77.6)
50	6,920 (72.3)	6,370 (74.1)	5,060 (75.8)	4,300 (76.3)
55	5,710 (70.7)	5,440 (72.7)	5,060 (74.5)	4,300 (75.1)
60	4,700 (69.1)	4,450 (71.2)	4,220 (73.1)	4,050 (73.8)
65	3,840 (67.4)	3,620 (69.7)	3,400 (71.7)	3,230 (72.6)
70	3,040 (65.7)	2,900 (68.1)	2,690 (70.2)	2,540 (71.3)
75	2,370 (64)	2,250 (66.5)	2,070 (68.8)	1,930 (70)
80	1,790 (62.2)	1,670 (64.9)	1,540 (67.3)	1,400 (68.6)
85	1,280 (59.9)	1,170 (63.2)	1,050 (65.7)	920 (67.2)
90	840 (57.4)	720 (61.3)	610 (64.2)	500 (65.8)
Min. boom angle for indicated length (no load)	56.4°	60.3°	63.2°	64.8°
Max. boom length at 0° boom angle (no load)	47.6 ft.	47.6 ft.	47.6 ft.	47.6 ft.

NOTE: () Boom angles are in degrees.

80114811_0 V9

BOOM EXTENSION CAPACITY NOTES:

1. 36 ft. extension length may be used for single line lifting service only.
 2. For boom angles not shown, use the rating of the next lower boom angle.
- WARNING:** Operation of this machine with heavier loads than the capacities listed is strictly prohibited. Machine tipping with boom extension occurs rapidly and without advance warning.
3. Boom angle is the angle above or below horizontal of the longitudinal axis of the boom base section after lifting rated load.
 4. Capacities listed are with outriggers properly extended and vertical jacks set only.

RATED LIFTING CAPACITIES IN POUNDS
36 FT. FIXED OFFSETABLE BOOM EXTENSION
WITH 6,000 LB. COUNTERWEIGHT
ON OUTRIGGERS 50% EXTENDED - 360°
36 FT. EXTENSION AT 15° OFFSET ANGLE

Radius in Feet	Main Boom Length in Feet - Code #0420			
	120-G	132-H	144-J	150.5
40	7,000 (79)			
45	6,730 (77.5)			
50	6,540 (76.1)	6,400 (77.1)		
55	6,360 (74.6)	6,150 (75.8)	5,590 (76.8)	4,940 (77.3)
60	5,520 (73.1)	5,290 (74.4)	5,060 (75.6)	4,900 (76.1)
65	4,580 (71.6)	4,370 (73.1)	4,170 (74.3)	4,020 (74.9)
70	3,710 (70)	3,580 (71.7)	3,390 (73)	3,250 (73.7)
75	2,970 (68.4)	2,880 (70.2)	2,720 (71.7)	2,590 (72.5)
80	2,330 (66.7)	2,240 (68.7)	2,130 (70.4)	2,000 (71.2)
85	1,780 (64.4)	1,690 (67.2)	1,600 (69)	1,480 (69.9)
90	1,290 (61.9)	1,200 (65.3)	1,110 (67.6)	1,020 (68.6)
95	860 (59.3)	770 (62.9)	680 (66.1)	600 (67.2)
Min. boom angle for indicated length (no load)	58.3°	61.9°	65.1°	66.2°
Max. boom length at 0° boom angle (no load)	47.6 ft.	47.6 ft.	47.6 ft.	47.6 ft.

NOTE: () Boom angles are in degrees.

80114811_15 V9

BOOM EXTENSION CAPACITY NOTES:

1. 36 ft. extension length may be used for single line lifting service only.
2. For boom angles not shown, use the rating of the next lower boom angle.

WARNING: Operation of this machine with heavier loads than the capacities listed is strictly prohibited. Machine tipping with boom extension occurs rapidly and without advance warning.
3. Boom angle is the angle above or below horizontal of the longitudinal axis of the boom base section after lifting rated load.
4. Capacities listed are with outriggers properly extended and vertical jacks set only.

**RATED LIFTING CAPACITIES IN POUNDS
36 FT. FIXED OFFSETABLE BOOM EXTENSION
WITH 6,000 LB. COUNTERWEIGHT
ON OUTRIGGERS 50% EXTENDED - 360°
36 FT. EXTENSION AT 30° OFFSET ANGLE**

Radius in Feet	Main Boom Length in Feet - Code #0425			
	120-G	132-H	144-J	150.5
50	5,660 (78.8)			
55	5,530 (77.3)	5,440 (78.4)		
60	5,420 (75.7)	5,350 (77)	5,190 (78.1)	
65	5,240 (74.1)	5,060 (75.6)	4,870 (76.8)	4,730 (77.4)
70	4,300 (72.5)	4,200 (74.1)	4,030 (75.5)	3,900 (76.2)
75	3,490 (70.8)	3,430 (72.6)	3,300 (74.2)	3,170 (74.9)
80	2,800 (68.8)	2,740 (71.1)	2,650 (72.8)	2,540 (73.6)
85	2,200 (66.1)	2,130 (69.5)	2,070 (71.4)	1,970 (72.3)
90	1,660 (63.4)	1,600 (67.2)	1,540 (70)	1,470 (71)
95	1,190 (60.6)	1,130 (64.6)	1,070 (68.1)	1,000 (69.6)
100	770 (57.7)	710 (62)	650 (65.7)	580 (67.5)
Min. boom angle for indicated length (no load)	56.7°	61°	64.7°	66.5°
Max. boom length at 0° boom angle (no load)	47.6 ft.	47.6 ft.	47.6 ft.	47.6 ft.

NOTE: () Boom angles are in degrees.

80114811_30 V9

BOOM EXTENSION CAPACITY NOTES:

1. 36 ft. extension length may be used for single line lifting service only.
 2. For boom angles not shown, use the rating of the next lower boom angle.
- WARNING:** Operation of this machine with heavier loads than the capacities listed is strictly prohibited. Machine tipping with boom extension occurs rapidly and without advance warning.
3. Boom angle is the angle above or below horizontal of the longitudinal axis of the boom base section after lifting rated load.
 4. Capacities listed are with outriggers properly extended and vertical jacks set only.

RATED LIFTING CAPACITIES IN POUNDS

37 FT. - 151 FT. BOOM

WITH 6,000 LB. COUNTERWEIGHT

ON OUTRIGGERS 0% EXTENDED - 360°

Radius in Feet	Main Boom Length in Feet - Code #0801 or #0803 or #0805						
	36.8	48-A	60-B	72-C	84-D	96-E	108-F
6	81,950 (71.5)	41,500 (76.7)					
8	54,250 (68)	41,500 (74.2)	41,500 (78.2)				
10	39,500 (64.4)	37,200 (71.6)	34,850 (76.2)	32,650 (79.4)			
12	30,300 (60.7)	29,050 (69)	27,600 (74.2)	26,150 (77.8)			
15	21,550 (54.9)	21,100 (64.9)	20,350 (71.1)	19,550 (75.3)	18,650 (78)	17,850 (79.9)	
20	12,900 (43.7)	13,400 (57.8)	13,150 (65.8)	12,850 (71)	12,400 (74.5)	12,000 (77)	11,500 (79.3)
25	7,690 (28.9)	8,740 (49.9)	8,910 (60.3)	8,780 (66.7)	8,560 (71)	8,330 (74.1)	8,060 (76.7)
30		5,490 (40.5)	5,990 (54.3)	6,050 (62.1)	5,940 (67.4)	5,820 (71.1)	5,640 (74.2)
35		3,250 (28.5)	3,890 (47.6)	4,070 (57.2)	4,050 (63.6)	3,990 (68)	3,880 (71.5)
40			2,260 (39.6)	2,540 (52)	2,620 (59.5)	2,600 (64.8)	2,530 (68.8)
45			1,030 (30)	1,350 (46.1)	1,460 (55.3)	1,510 (61.4)	1,470 (66.1)
50					520 (50.7)	610 (57.8)	620 (63)
Min. boom angle for indicated length (no load)			29°	45.1°	49.7°	56.8°	62°
Max. boom length at 0° boom angle (no load)			47.6 ft.				

NOTE: () Boom angles are in degrees.

Boom Angle	Main Boom Length in Feet						
	36.8	48-A	60-B	72-C	84-D	96-E	108-F
0°	5,380 (28.3)	1,770 (39.5)					

NOTE: () Reference radii in feet. 80114743 V9

Rated Load Reductions from main boom capacity when lifting over main boom nose with:							
26-45' tele. erected (retracted)	2450	2350	2250	2200	2150	2150	2100
26-45' tele. erected (extended)	2800	2600	2450	2350	2300	2250	2200
36' lattice	2000	1850	1750	1700	1650	1600	1600

RATED LIFTING CAPACITIES IN POUNDS
37 FT. - 151 FT. BOOM
WITH 3,000 LB. COUNTERWEIGHT
ON OUTRIGGERS FULLY EXTENDED - 360°

Radius in Feet	Main Boom Length in Feet - Code #1001 or #1003 or #1005										
	36.8	48-A	60-B	72-C	84-D	96-E	108-F	120-G	132-H	144-J	150.5
6	110,000 (71.5)	41,500 (76.7)									
8	105,500 (68)	41,500 (74.2)	41,500 (78.2)								
10	92,550 (64.4)	41,500 (71.6)	41,500 (76.2)	41,500 (79.4)							
12	82,000 (60.7)	41,500 (69)	41,500 (74.2)	41,500 (77.8)							
15	69,650 (54.9)	41,500 (64.9)	41,500 (71.1)	41,500 (75.3)	39,700 (78)	33,200 (79.9)					
20	52,800 (43.7)	41,500 (57.8)	41,500 (65.8)	41,500 (71)	36,100 (74.5)	30,250 (77)	23,550 (79.3)				
25	37,200 (28.9)	40,150 (49.9)	40,900 (60.3)	38,150 (66.7)	32,950 (71)	27,400 (74.1)	21,150 (76.7)	18,600 (78.9)			
30		31,200 (40.5)	31,950 (54.3)	32,400 (62.1)	30,250 (67.4)	24,700 (71.1)	19,100 (74.2)	16,950 (76.7)	14,500 (78.4)	11,300 (79.9)	
35		24,300 (28.5)	24,900 (47.6)	26,200 (57.2)	26,000 (63.6)	22,350 (68)	17,250 (71.5)	15,450 (74.3)	13,900 (76.4)	11,300 (78)	10,050 (78.8)
40			19,250 (39.6)	20,500 (52)	20,200 (59.5)	19,900 (64.8)	15,700 (68.8)	14,150 (72)	12,800 (74.3)	11,300 (76.1)	10,050 (77)
45			15,250 (30)	16,300 (46.1)	16,100 (55.3)	16,400 (61.4)	14,350 (66.1)	12,950 (69.6)	11,750 (72.1)	10,700 (74.2)	10,050 (75.2)
50			12,350 (15.5)	13,200 (39.2)	13,100 (50.7)	13,600 (57.8)	12,950 (63)	11,800 (67.1)	10,850 (70)	9,930 (72.3)	9,470 (73.4)
55				10,800 (31.1)	10,750 (45.2)	11,250 (54)	10,750 (59.8)	10,150 (64.4)	10,000 (67.8)	9,200 (70.3)	8,780 (71.5)
60				8,900 (20.4)	8,820 (39.1)	9,340 (49.9)	8,950 (56.5)	8,730 (61.5)	8,810 (65.4)	8,540 (68.3)	8,160 (69.6)
65					7,370 (32)	7,690 (44.8)	7,450 (53)	7,500 (58.5)	7,510 (62.8)	7,510 (66.2)	7,300 (67.7)
70					6,170 (23.3)	6,280 (39.2)	6,190 (48.9)	6,420 (55.4)	6,400 (60.2)	6,370 (63.9)	6,400 (65.6)
75					5,130 (8.2)	5,050 (32.9)	5,110 (44.2)	5,470 (52.1)	5,430 (57.4)	5,400 (61.5)	5,540 (63.4)
80						3,960 (25.4)	4,170 (39.1)	4,630 (48.2)	4,600 (54.6)	4,560 (59.1)	4,720 (61.2)
85						3,010 (15)	3,350 (33.4)	3,880 (43.8)	3,860 (51.6)	3,840 (56.6)	3,940 (58.9)
90							2,630 (26.9)	3,200 (39.1)	3,200 (47.7)	3,200 (54)	3,190 (56.5)
95							1,980 (18.6)	2,590 (34)	2,610 (43.6)	2,640 (51)	2,480 (54)
100								2,030 (28.1)	2,090 (39.2)	2,140 (47.4)	1,790 (51.1)
105								1,520 (21.1)	1,610 (34.5)	1,690 (43.5)	1,140 (47.5)
110								1,060 (10.5)	1,180 (29.2)	1,280 (39.4)	510 (43.8)
115									780 (23)	910 (35)	
120										580 (30.1)	
Min. boom angle for indicated length (no load)							9.5°	9.5°	22°	29.1°	42.8°
Max. boom length at 0° boom angle (no load)							95.6 ft.				

NOTE: () Boom angles are in degrees.

Boom Angle	Main Boom Length in Feet										
	36.8	48-A	60-B	72-C	84-D	96-E	108-F	120-G	132-H	144-J	150.5
0°	14,400 (28.3)	10,000 (39.5)	6,570 (51.5)	4,360 (63.5)	2,820 (75.5)	1,690 (87.5)					

NOTE: () Reference radii in feet.

80114734 V9

Rated Load Reductions from main boom capacity when lifting over main boom nose with:											
26-45' tele. erected (retracted)	2450	2350	2250	2200	2150	2150	2100	2100	2050	2050	2050
26-45' tele. erected (extended)	2800	2600	2450	2350	2300	2250	2200	2200	2150	2150	2150
36' lattice	2000	1850	1750	1700	1650	1600	1600	1550	1550	1550	1500

**RATED LIFTING CAPACITIES IN POUNDS
36 FT. FIXED OFFSETABLE BOOM EXTENSION
WITH 3,000 LB. COUNTERWEIGHT
ON OUTRIGGERS FULLY EXTENDED - 360°
36 FT. EXTENSION AT 0° OFFSET ANGLE**

Radius in Feet	Main Boom Length in Feet - Code #1015			
	120-G	132-H	144-J	150.5
30	7,640 (78.4)			
35	7,640 (76.9)	6,310 (78.5)	5,060 (79.9)	4,300 (80)
40	7,640 (75.4)	6,310 (77)	5,060 (78.5)	4,300 (78.8)
45	7,640 (73.9)	6,310 (75.6)	5,060 (77.2)	4,300 (77.6)
50	7,640 (72.3)	6,310 (74.1)	5,060 (75.8)	4,300 (76.3)
55	7,260 (70.7)	6,310 (72.7)	5,060 (74.5)	4,300 (75.1)
60	6,880 (69.1)	6,310 (71.2)	5,060 (73.1)	4,300 (73.8)
65	6,520 (67.4)	6,260 (69.7)	5,060 (71.7)	4,300 (72.6)
70	6,180 (65.7)	5,960 (68.1)	5,060 (70.2)	4,300 (71.3)
75	5,870 (64)	5,690 (66.5)	5,060 (68.8)	4,300 (70)
80	5,380 (62.2)	5,260 (64.9)	4,990 (67.3)	4,300 (68.6)
85	4,620 (59.9)	4,490 (63.2)	4,380 (65.7)	4,270 (67.2)
90	3,950 (57.4)	3,830 (61.3)	3,710 (64.2)	3,610 (65.8)
95	3,360 (54.8)	3,240 (59.1)	3,130 (62.6)	3,030 (64.1)
100	2,850 (52.2)	2,730 (56.8)	2,610 (60.6)	2,510 (62.2)
105	2,390 (49.4)	2,270 (54.4)	2,150 (58.5)	2,050 (60.2)
110	1,980 (46.5)	1,850 (51.9)	1,740 (56.3)	1,640 (58.2)
115	1,610 (43.4)	1,480 (49.4)	1,370 (54.1)	1,270 (56.1)
120	1,270 (40.1)	1,150 (46.7)	1,030 (51.8)	930 (53.9)
125	970 (36.6)	840 (43.9)	720 (49.5)	630 (51.2)
130	700 (32.7)	570 (40.9)		
Min. boom angle for indicated length (no load)	31.7°	39.9°	48.5°	50.2°
Max. boom length at 0° boom angle (no load)	47.6 ft.	47.6 ft.	47.6 ft.	47.6 ft.

NOTE: () Boom angles are in degrees.

80114804_0 V9

BOOM EXTENSION CAPACITY NOTES:

1. 36 ft. extension length may be used for single line lifting service only.
2. For boom angles not shown, use the rating of the next lower boom angle.
WARNING: Operation of this machine with heavier loads than the capacities listed is strictly prohibited. Machine tipping with boom extension occurs rapidly and without advance warning.
3. Boom angle is the angle above or below horizontal of the longitudinal axis of the boom base section after lifting rated load.
4. Capacities listed are with outriggers properly extended and vertical jacks set only.

**RATED LIFTING CAPACITIES IN POUNDS
36 FT. FIXED OFFSETABLE BOOM EXTENSION
WITH 3,000 LB. COUNTERWEIGHT
ON OUTRIGGERS FULLY EXTENDED - 360°
36 FT. EXTENSION AT 15° OFFSET ANGLE**

Radius in Feet	Main Boom Length in Feet - Code #1020			
	120-G	132-H	144-J	150.5
40	7,000 (79)			
45	6,730 (77.5)			
50	6,540 (76.1)	6,400 (77.1)		
55	6,360 (74.6)	6,150 (75.8)	5,410 (76.8)	4,650 (77.3)
60	6,100 (73.1)	5,880 (74.4)	5,410 (75.6)	4,650 (76.1)
65	5,810 (71.6)	5,620 (73.1)	5,370 (74.3)	4,650 (74.9)
70	5,550 (70)	5,380 (71.7)	5,160 (73)	4,650 (73.7)
75	5,300 (68.4)	5,150 (70.2)	4,960 (71.7)	4,650 (72.5)
80	5,070 (66.7)	4,930 (68.7)	4,760 (70.4)	4,650 (71.2)
85	4,860 (64.4)	4,730 (67.2)	4,580 (69)	4,480 (69.9)
90	4,410 (61.9)	4,320 (65.3)	4,230 (67.6)	4,140 (68.6)
95	3,780 (59.3)	3,690 (62.9)	3,600 (66.1)	3,520 (67.2)
100	3,220 (56.7)	3,140 (60.4)	3,040 (63.8)	2,960 (65.5)
105	2,730 (53.9)	2,640 (57.9)	2,550 (61.5)	2,460 (63.2)
110	2,280 (51)	2,190 (55.3)	2,100 (59.1)	2,020 (60.9)
115	1,880 (47.9)	1,790 (52.6)	1,700 (56.6)	1,620 (58.6)
120	1,510 (44.6)	1,420 (49.8)	1,340 (54.1)	1,250 (56.1)
125	1,170 (41.1)	1,090 (46.8)	1,000 (51.4)	920 (53.6)
130	870 (37.2)	790 (43.7)	700 (48.7)	620 (51)
135	590 (31.6)	500 (40.3)		
Min. boom angle for indicated length (no load)	30.6°	39.3°	47.7°	50°
Max. boom length at 0° boom angle (no load)	47.6 ft.	47.6 ft.	47.6 ft.	47.6 ft.

NOTE: () Boom angles are in degrees.

80114804_15 V9

BOOM EXTENSION CAPACITY NOTES:

- 36 ft. extension length may be used for single line lifting service only.
- For boom angles not shown, use the rating of the next lower boom angle.
WARNING: Operation of this machine with heavier loads than the capacities listed is strictly prohibited. Machine tipping with boom extension occurs rapidly and without advance warning.
- Boom angle is the angle above or below horizontal of the longitudinal axis of the boom base section after lifting rated load.
- Capacities listed are with outriggers properly extended and vertical jacks set only.

**RATED LIFTING CAPACITIES IN POUNDS
36 FT. FIXED OFFSETABLE BOOM EXTENSION
WITH 3,000 LB. COUNTERWEIGHT
ON OUTRIGGERS FULLY EXTENDED - 360°
36 FT. EXTENSION AT 30° OFFSET ANGLE**

Radius in Feet	Main Boom Length in Feet - Code #1025			
	120-G	132-H	144-J	150.5
50	5,660 (78.8)			
55	5,530 (77.3)	5,440 (78.4)		
60	5,420 (75.7)	5,350 (77)	5,190 (78.1)	
65	5,320 (74.1)	5,190 (75.6)	5,000 (76.8)	4,870 (77.4)
70	5,140 (72.5)	4,990 (74.1)	4,810 (75.5)	4,700 (76.2)
75	4,940 (70.8)	4,800 (72.6)	4,640 (74.2)	4,540 (74.9)
80	4,760 (68.8)	4,630 (71.1)	4,470 (72.8)	4,380 (73.6)
85	4,580 (66.1)	4,460 (69.5)	4,320 (71.4)	4,230 (72.3)
90	4,420 (63.4)	4,310 (67.2)	4,170 (70)	4,090 (71)
95	4,130 (60.6)	4,070 (64.6)	4,000 (68.1)	3,930 (69.6)
100	3,530 (57.7)	3,470 (62)	3,410 (65.7)	3,340 (67.5)
105	2,990 (54.6)	2,940 (59.3)	2,880 (63.3)	2,810 (65.2)
110	2,510 (51.5)	2,460 (56.5)	2,400 (60.8)	2,330 (62.8)
115	2,070 (48.1)	2,030 (53.6)	1,970 (58.2)	1,900 (60.4)
120	1,680 (44.5)	1,630 (50.6)	1,570 (55.5)	1,510 (57.8)
125	1,310 (40.6)	1,270 (47.4)	1,220 (52.8)	1,150 (55.2)
130	970 (36)	940 (44)	890 (49.9)	820 (52.5)
135		630 (40.4)	580 (46.8)	520 (49.7)
Min. boom angle for indicated length (no load)	35°	39.4°	45.8°	48.7°
Max. boom length at 0° boom angle (no load)	47.6 ft.	47.6 ft.	47.6 ft.	47.6 ft.

NOTE: () Boom angles are in degrees.

80114804_30 V9

BOOM EXTENSION CAPACITY NOTES:

1. 36 ft. extension length may be used for single line lifting service only.
2. For boom angles not shown, use the rating of the next lower boom angle.
WARNING: Operation of this machine with heavier loads than the capacities listed is strictly prohibited. Machine tipping with boom extension occurs rapidly and without advance warning.
3. Boom angle is the angle above or below horizontal of the longitudinal axis of the boom base section after lifting rated load.
4. Capacities listed are with outriggers properly extended and vertical jacks set only.

RATED LIFTING CAPACITIES IN POUNDS
37 FT. - 151 FT. BOOM
WITH 3,000 LB. COUNTERWEIGHT
ON OUTRIGGERS FULLY EXTENDED - OVER REAR

Radius in Feet	Main Boom Length in Feet - Code #1026 or #1028 or #1030										
	36.8	48-A	60-B	72-C	84-D	96-E	108-F	120-G	132-H	144-J	150.5
6	110,000 (71.5)	41,500 (76.7)									
8	106,500 (68)	41,500 (74.2)	41,500 (78.2)								
10	96,050 (64.4)	41,500 (71.6)	41,500 (76.2)	41,500 (79.4)							
12	87,100 (60.7)	41,500 (69)	41,500 (74.2)	41,500 (77.8)							
15	75,200 (54.9)	41,500 (64.9)	41,500 (71.1)	41,500 (75.3)	39,700 (78)	33,200 (79.9)					
20	55,700 (43.7)	41,500 (57.8)	41,500 (65.8)	41,500 (71)	36,100 (74.5)	30,250 (77)	23,550 (79.3)				
25	37,200 (28.9)	41,500 (49.9)	41,500 (60.3)	38,150 (66.7)	32,950 (71)	27,400 (74.1)	21,150 (76.7)	18,600 (78.9)			
30		34,050 (40.5)	34,750 (54.3)	34,950 (62.1)	30,250 (67.4)	24,700 (71.1)	19,100 (74.2)	16,950 (76.7)	14,500 (78.4)	11,300 (79.9)	
35		27,200 (28.5)	28,050 (47.6)	28,350 (57.2)	27,950 (63.6)	22,350 (68)	17,250 (71.5)	15,450 (74.3)	13,900 (76.4)	11,300 (78)	10,050 (78.8)
40			22,150 (39.6)	22,400 (52)	22,550 (59.5)	20,300 (64.8)	15,700 (68.8)	14,150 (72)	12,800 (74.3)	11,300 (76.1)	10,050 (77)
45			17,950 (30)	18,250 (46.1)	18,400 (55.3)	18,550 (61.4)	14,350 (66.1)	12,950 (69.6)	11,750 (72.1)	10,700 (74.2)	10,050 (75.2)
50			13,050 (15.5)	15,100 (39.2)	15,250 (50.7)	15,350 (57.8)	13,200 (63)	11,900 (67.1)	10,850 (70)	9,930 (72.3)	9,470 (73.4)
55				12,650 (31.1)	12,750 (45.2)	12,900 (54)	12,150 (59.8)	11,000 (64.4)	10,000 (67.8)	9,200 (70.3)	8,780 (71.5)
60				10,700 (20.4)	10,850 (39.1)	11,000 (49.9)	11,100 (56.5)	10,150 (61.5)	9,300 (65.4)	8,540 (68.3)	8,160 (69.6)
65					9,290 (32)	9,410 (44.8)	9,480 (53)	9,460 (58.5)	8,640 (62.8)	7,940 (66.2)	7,590 (67.7)
70					7,960 (23.3)	8,070 (39.2)	8,140 (48.9)	8,210 (55.4)	8,030 (60.2)	7,380 (63.9)	7,070 (65.6)
75					5,380 (8.2)	6,950 (32.9)	7,010 (44.2)	7,070 (52.1)	7,120 (57.4)	6,840 (61.5)	6,550 (63.4)
80						5,980 (25.4)	6,040 (39.1)	6,100 (48.2)	6,140 (54.6)	6,160 (59.1)	5,980 (61.2)
85						5,130 (15)	5,210 (33.4)	5,260 (43.8)	5,300 (51.6)	5,320 (56.6)	5,270 (58.9)
90							4,480 (26.9)	4,530 (39.1)	4,570 (47.7)	4,580 (54)	4,540 (56.5)
95							3,830 (18.6)	3,880 (34)	3,920 (43.6)	3,930 (51)	3,890 (54)
100								3,310 (28.1)	3,350 (39.2)	3,360 (47.4)	3,320 (51.1)
105								2,800 (21.1)	2,830 (34.5)	2,850 (43.5)	2,800 (47.5)
110								2,340 (10.5)	2,380 (29.2)	2,390 (39.4)	2,340 (43.8)
115									1,960 (23)	1,970 (35)	1,930 (39.8)
120									1,580 (14.8)	1,600 (30.1)	1,550 (35.6)
125										1,260 (24.6)	1,210 (31)
130										940 (17.7)	900 (25.7)
135											610 (19.5)
Min. boom angle for indicated length (no load)							9.5°	9.5°	13.8°	16.7°	18.5°
Max. boom length at 0° boom angle (no load)							95.6 ft.				

NOTE: () Boom angles are in degrees.

Boom Angle	Main Boom Length in Feet										
	36.8	48-A	60-B	72-C	84-D	96-E	108-F	120-G	132-H	144-J	150.5
0°	14,400 (28.3)	10,000 (39.5)	6,570 (51.5)	4,360 (63.5)	2,820 (75.5)	1,690 (87.5)					

NOTE: () Reference radii in feet.

80114735 V9

Rated Load Reductions from main boom capacity when lifting over main boom nose with:											
26-45' tele. erected (retracted)	2450	2350	2250	2200	2150	2150	2100	2100	2050	2050	2050
26-45' tele. erected (extended)	2800	2600	2450	2350	2300	2250	2200	2200	2150	2150	2150
36' lattice	2000	1850	1750	1700	1650	1600	1600	1550	1550	1550	1500

**RATED LIFTING CAPACITIES IN POUNDS
36 FT. FIXED OFFSETABLE BOOM EXTENSION
WITH 3,000 LB. COUNTERWEIGHT
ON OUTRIGGERS FULLY EXTENDED - OVER REAR
36 FT. EXTENSION AT 0° OFFSET ANGLE**

Radius in Feet	Main Boom Length in Feet - Code #1040			
	120-G	132-H	144-J	150.5
30	7,640 (78.4)			
35	7,640 (76.9)	6,310 (78.5)	5,060 (79.9)	4,300 (80)
40	7,640 (75.4)	6,310 (77)	5,060 (78.5)	4,300 (78.8)
45	7,640 (73.9)	6,310 (75.6)	5,060 (77.2)	4,300 (77.6)
50	7,640 (72.3)	6,310 (74.1)	5,060 (75.8)	4,300 (76.3)
55	7,260 (70.7)	6,310 (72.7)	5,060 (74.5)	4,300 (75.1)
60	6,880 (69.1)	6,310 (71.2)	5,060 (73.1)	4,300 (73.8)
65	6,520 (67.4)	6,260 (69.7)	5,060 (71.7)	4,300 (72.6)
70	6,180 (65.7)	5,960 (68.1)	5,060 (70.2)	4,300 (71.3)
75	5,870 (64)	5,690 (66.5)	5,060 (68.8)	4,300 (70)
80	5,580 (62.2)	5,400 (64.9)	4,990 (67.3)	4,300 (68.6)
85	5,310 (59.9)	5,060 (63.2)	4,680 (65.7)	4,300 (67.2)
90	5,070 (57.4)	4,750 (61.3)	4,380 (64.2)	4,200 (65.8)
95	4,650 (54.8)	4,450 (59.1)	4,100 (62.6)	3,930 (64.1)
100	4,070 (52.2)	3,960 (56.8)	3,840 (60.6)	3,670 (62.2)
105	3,560 (49.4)	3,440 (54.4)	3,320 (58.5)	3,230 (60.2)
110	3,090 (46.5)	2,970 (51.9)	2,860 (56.3)	2,760 (58.2)
115	2,680 (43.4)	2,550 (49.4)	2,440 (54.1)	2,340 (56.1)
120	2,300 (40.1)	2,180 (46.7)	2,060 (51.8)	1,960 (53.9)
125	1,950 (36.6)	1,830 (43.9)	1,710 (49.5)	1,620 (51.2)
130	1,640 (32.7)	1,520 (40.9)	1,400 (47)	1,300 (48.3)
135	1,360 (27.8)	1,230 (37.6)	1,110 (44.4)	1,010 (45.3)
140	1,110 (20.9)	970 (34.1)	840 (41.6)	750 (42.2)
145	880 (12)	730 (29.8)	600 (38.6)	500 (39)
150		510 (23.4)		
Min. boom angle for indicated length (no load)	11°	22.4°	37.6°	38°
Max. boom length at 0° boom angle (no load)	47.6 ft.	47.6 ft.	47.6 ft.	47.6 ft.

NOTE: () Boom angles are in degrees.

80114805_0 V9

BOOM EXTENSION CAPACITY NOTES:

1. 36 ft. extension length may be used for single line lifting service only.
2. For boom angles not shown, use the rating of the next lower boom angle.
WARNING: Operation of this machine with heavier loads than the capacities listed is strictly prohibited. Machine tipping with boom extension occurs rapidly and without advance warning.
3. Boom angle is the angle above or below horizontal of the longitudinal axis of the boom base section after lifting rated load.
4. Capacities listed are with outriggers properly extended and vertical jacks set only.

RATED LIFTING CAPACITIES IN POUNDS
36 FT. FIXED OFFSETABLE BOOM EXTENSION
WITH 3,000 LB. COUNTERWEIGHT
ON OUTRIGGERS FULLY EXTENDED - OVER REAR
36 FT. EXTENSION AT 15° OFFSET ANGLE

Radius in Feet	Main Boom Length in Feet - Code #1045			
	120-G	132-H	144-J	150.5
40	7,000 (79)			
45	6,730 (77.5)			
50	6,540 (76.1)	6,400 (77.1)		
55	6,360 (74.6)	6,150 (75.8)	5,410 (76.8)	4,650 (77.3)
60	6,100 (73.1)	5,880 (74.4)	5,410 (75.6)	4,650 (76.1)
65	5,810 (71.6)	5,620 (73.1)	5,370 (74.3)	4,650 (74.9)
70	5,550 (70)	5,380 (71.7)	5,160 (73)	4,650 (73.7)
75	5,300 (68.4)	5,150 (70.2)	4,960 (71.7)	4,650 (72.5)
80	5,070 (66.7)	4,930 (68.7)	4,760 (70.4)	4,650 (71.2)
85	4,860 (64.4)	4,730 (67.2)	4,580 (69)	4,480 (69.9)
90	4,660 (61.9)	4,550 (65.3)	4,400 (67.6)	4,250 (68.6)
95	4,480 (59.3)	4,370 (62.9)	4,150 (66.1)	3,980 (67.2)
100	4,310 (56.7)	4,200 (60.4)	3,890 (63.8)	3,730 (65.5)
105	3,890 (53.9)	3,800 (57.9)	3,650 (61.5)	3,500 (63.2)
110	3,390 (51)	3,310 (55.3)	3,220 (59.1)	3,140 (60.9)
115	2,940 (47.9)	2,860 (52.6)	2,770 (56.6)	2,690 (58.6)
120	2,530 (44.6)	2,450 (49.8)	2,360 (54.1)	2,280 (56.1)
125	2,160 (41.1)	2,070 (46.8)	1,990 (51.4)	1,910 (53.6)
130	1,810 (37.2)	1,730 (43.7)	1,650 (48.7)	1,570 (51)
135	1,500 (31.6)	1,420 (40.3)	1,330 (45.8)	1,250 (48.3)
140	1,210 (24.1)	1,130 (36.6)	1,040 (42.8)	960 (45.5)
145		860 (31.9)	780 (39.5)	700 (42.5)
150		610 (25.4)	530 (36)	
Min. boom angle for indicated length (no load)	23.1°	24.4°	35°	41.5°
Max. boom length at 0° boom angle (no load)	47.6 ft.	47.6 ft.	47.6 ft.	47.6 ft.

NOTE: () Boom angles are in degrees.

80114805_15 V9

BOOM EXTENSION CAPACITY NOTES:

1. 36 ft. extension length may be used for single line lifting service only.
2. For boom angles not shown, use the rating of the next lower boom angle.

WARNING: Operation of this machine with heavier loads than the capacities listed is strictly prohibited. Machine tipping with boom extension occurs rapidly and without advance warning.
3. Boom angle is the angle above or below horizontal of the longitudinal axis of the boom base section after lifting rated load.
4. Capacities listed are with outriggers properly extended and vertical jacks set only.

RATED LIFTING CAPACITIES IN POUNDS
36 FT. FIXED OFFSETABLE BOOM EXTENSION
WITH 3,000 LB. COUNTERWEIGHT
ON OUTRIGGERS FULLY EXTENDED - OVER REAR
36 FT. EXTENSION AT 30° OFFSET ANGLE

Radius in Feet	Main Boom Length in Feet - Code #1050			
	120-G	132-H	144-J	150.5
50	5,660 (78.8)			
55	5,530 (77.3)	5,440 (78.4)		
60	5,420 (75.7)	5,350 (77)	5,190 (78.1)	
65	5,320 (74.1)	5,190 (75.6)	5,000 (76.8)	4,870 (77.4)
70	5,140 (72.5)	4,990 (74.1)	4,810 (75.5)	4,700 (76.2)
75	4,940 (70.8)	4,800 (72.6)	4,640 (74.2)	4,540 (74.9)
80	4,760 (68.8)	4,630 (71.1)	4,470 (72.8)	4,380 (73.6)
85	4,580 (66.1)	4,460 (69.5)	4,320 (71.4)	4,230 (72.3)
90	4,420 (63.4)	4,310 (67.2)	4,170 (70)	4,090 (71)
95	4,270 (60.6)	4,160 (64.6)	4,030 (68.1)	3,960 (69.6)
100	4,130 (57.7)	4,020 (62)	3,900 (65.7)	3,820 (67.5)
105	4,010 (54.6)	3,900 (59.3)	3,730 (63.3)	3,580 (65.2)
110	3,620 (51.5)	3,570 (56.5)	3,500 (60.8)	3,360 (62.8)
115	3,140 (48.1)	3,090 (53.6)	3,030 (58.2)	2,970 (60.4)
120	2,700 (44.5)	2,650 (50.6)	2,600 (55.5)	2,530 (57.8)
125	2,290 (40.6)	2,250 (47.4)	2,200 (52.8)	2,130 (55.2)
130	1,910 (36)	1,880 (44)	1,830 (49.9)	1,770 (52.5)
135		1,540 (40.4)	1,490 (46.8)	1,430 (49.7)
140		1,220 (36.3)	1,180 (43.6)	1,120 (46.8)
145			890 (40.2)	830 (43.7)
150			620 (36.4)	560 (40.4)
Min. boom angle for indicated length (no load)	35°	35.3°	35.4°	39.4°
Max. boom length at 0° boom angle (no load)	47.6 ft.	47.6 ft.	47.6 ft.	47.6 ft.

NOTE: () Boom angles are in degrees.

80114805_30 V9

BOOM EXTENSION CAPACITY NOTES:

1. 36 ft. extension length may be used for single line lifting service only.
 2. For boom angles not shown, use the rating of the next lower boom angle.
- WARNING:** Operation of this machine with heavier loads than the capacities listed is strictly prohibited. Machine tipping with boom extension occurs rapidly and without advance warning.
3. Boom angle is the angle above or below horizontal of the longitudinal axis of the boom base section after lifting rated load.
 4. Capacities listed are with outriggers properly extended and vertical jacks set only.

RATED LIFTING CAPACITIES IN POUNDS

37 FT. - 151 FT. BOOM

WITH 3,000 LB. COUNTERWEIGHT

ON OUTRIGGERS 75% EXTENDED - 360°

Radius in Feet	Main Boom Length in Feet - Code #1201 or #1203 or #1205										
	36.8	48-A	60-B	72-C	84-D	96-E	108-F	120-G	132-H	144-J	150.5
6	110,000 (71.5)	41,500 (76.7)									
8	97,450 (68)	41,500 (74.2)	41,500 (78.2)								
10	84,900 (64.4)	41,500 (71.6)	41,500 (76.2)	41,500 (79.4)							
12	75,000 (60.7)	41,500 (69)	41,500 (74.2)	41,500 (77.8)							
15	63,450 (54.9)	41,500 (64.9)	41,500 (71.1)	41,500 (75.3)	39,700 (78)	33,200 (79.9)					
20	45,000 (43.7)	41,500 (57.8)	41,500 (65.8)	41,500 (71)	36,100 (74.5)	30,250 (77)	23,550 (79.3)				
25	30,650 (28.9)	31,650 (49.9)	31,550 (60.3)	30,550 (66.7)	29,450 (71)	27,400 (74.1)	21,150 (76.7)	18,600 (78.9)			
30		21,900 (40.5)	22,400 (54.3)	22,700 (62.1)	22,100 (67.4)	21,500 (71.1)	19,100 (74.2)	16,950 (76.7)	14,500 (78.4)	11,300 (79.9)	
35		16,000 (28.5)	16,550 (47.6)	16,900 (57.2)	17,100 (63.6)	16,750 (68)	16,350 (71.5)	15,450 (74.3)	13,900 (76.4)	11,300 (78)	10,050 (78.8)
40			12,600 (39.6)	12,900 (52)	13,050 (59.5)	13,200 (64.8)	13,050 (68.8)	12,800 (72)	12,500 (74.3)	11,300 (76.1)	10,050 (77)
45			9,800 (30)	10,100 (46.1)	10,300 (55.3)	10,450 (61.4)	10,550 (66.1)	10,400 (69.6)	10,200 (72.1)	9,970 (74.2)	9,780 (75.2)
50			7,600 (15.5)	7,990 (39.2)	8,160 (50.7)	8,300 (57.8)	8,380 (63)	8,460 (67.1)	8,360 (70)	8,180 (72.3)	8,010 (73.4)
55				6,310 (31.1)	6,490 (45.2)	6,620 (54)	6,700 (59.8)	6,770 (64.4)	6,830 (67.8)	6,720 (70.3)	6,580 (71.5)
60				4,930 (20.4)	5,150 (39.1)	5,280 (49.9)	5,360 (56.5)	5,430 (61.5)	5,480 (65.4)	5,500 (68.3)	5,390 (69.6)
65					4,050 (32)	4,180 (44.8)	4,260 (53)	4,320 (58.5)	4,370 (62.8)	4,400 (66.2)	4,350 (67.7)
70					3,110 (23.3)	3,270 (39.2)	3,340 (48.9)	3,410 (55.4)	3,450 (60.2)	3,480 (63.9)	3,430 (65.6)
75					2,320 (8.2)	2,490 (32.9)	2,570 (44.2)	2,630 (52.1)	2,680 (57.4)	2,700 (61.5)	2,650 (63.4)
80						1,810 (25.4)	1,910 (39.1)	1,970 (48.2)	2,010 (54.6)	2,030 (59.1)	1,990 (61.2)
85						1,220 (15)	1,330 (33.4)	1,390 (43.8)	1,430 (51.6)	1,450 (56.6)	1,410 (58.9)
90							810 (26.9)	890 (39.1)	930 (47.7)	950 (54)	910 (56.5)
95										510 (51)	
Min. boom angle for indicated length (no load)							25.9°	38.1°	46.7°	50°	55.5°
Max. boom length at 0° boom angle (no load)							95.6 ft.				

NOTE: () Boom angles are in degrees.

Boom Angle	Main Boom Length in Feet										
	36.8	48-A	60-B	72-C	84-D	96-E	108-F	120-G	132-H	144-J	150.5
0°	14,400 (28.3)	10,000 (39.5)	6,570 (51.5)	4,140 (63.5)	2,260 (75.5)	980 (87.5)					

NOTE: () Reference radii in feet.

80114736 V9

Rated Load Reductions from main boom capacity when lifting over main boom nose with:											
26-45' tele. erected (retracted)	2450	2350	2250	2200	2150	2150	2100	2100	2050	2050	2050
26-45' tele. erected (extended)	2800	2600	2450	2350	2300	2250	2200	2200	2150	2150	2150
36' lattice	2000	1850	1750	1700	1650	1600	1600	1550	1550	1550	1500

RATED LIFTING CAPACITIES IN POUNDS
36 FT. FIXED OFFSETABLE BOOM EXTENSION
WITH 3,000 LB. COUNTERWEIGHT
ON OUTRIGGERS 75% EXTENDED - 360°
36 FT. EXTENSION AT 0° OFFSET ANGLE

Radius in Feet	Main Boom Length in Feet - Code #1215			
	120-G	132-H	144-J	150.5
30	7,640 (78.4)			
35	7,640 (76.9)	6,310 (78.5)	5,060 (79.9)	4,300 (80)
40	7,640 (75.4)	6,310 (77)	5,060 (78.5)	4,300 (78.8)
45	7,640 (73.9)	6,310 (75.6)	5,060 (77.2)	4,300 (77.6)
50	7,640 (72.3)	6,310 (74.1)	5,060 (75.8)	4,300 (76.3)
55	7,260 (70.7)	6,310 (72.7)	5,060 (74.5)	4,300 (75.1)
60	6,250 (69.1)	5,970 (71.2)	5,060 (73.1)	4,300 (73.8)
65	5,150 (67.4)	4,990 (69.7)	4,750 (71.7)	4,300 (72.6)
70	4,220 (65.7)	4,090 (68.1)	3,930 (70.2)	3,770 (71.3)
75	3,430 (64)	3,310 (66.5)	3,190 (68.8)	3,060 (70)
80	2,760 (62.2)	2,640 (64.9)	2,520 (67.3)	2,420 (68.6)
85	2,170 (59.9)	2,050 (63.2)	1,940 (65.7)	1,840 (67.2)
90	1,660 (57.4)	1,540 (61.3)	1,430 (64.2)	1,330 (65.8)
95	1,220 (54.8)	1,100 (59.1)	980 (62.6)	880 (64.1)
100	820 (52.2)	700 (56.8)	580 (60.6)	
Min. boom angle for indicated length (no load)	51.2°	55.8°	59.6°	63.1°
Max. boom length at 0° boom angle (no load)	47.6 ft.	47.6 ft.	47.6 ft.	47.6 ft.

NOTE: () Boom angles are in degrees.

80114806_0 V9

BOOM EXTENSION CAPACITY NOTES:

1. 36 ft. extension length may be used for single line lifting service only.
2. For boom angles not shown, use the rating of the next lower boom angle.

WARNING: Operation of this machine with heavier loads than the capacities listed is strictly prohibited. Machine tipping with boom extension occurs rapidly and without advance warning.
3. Boom angle is the angle above or below horizontal of the longitudinal axis of the boom base section after lifting rated load.
4. Capacities listed are with outriggers properly extended and vertical jacks set only.

**RATED LIFTING CAPACITIES IN POUNDS
36 FT. FIXED OFFSETABLE BOOM EXTENSION
WITH 3,000 LB. COUNTERWEIGHT
ON OUTRIGGERS 75% EXTENDED - 360°
36 FT. EXTENSION AT 15° OFFSET ANGLE**

Radius in Feet	Main Boom Length in Feet - Code #1220			
	120-G	132-H	144-J	150.5
40	7,000 (79)			
45	6,730 (77.5)			
50	6,540 (76.1)	6,400 (77.1)		
55	6,360 (74.6)	6,150 (75.8)	5,410 (76.8)	4,650 (77.3)
60	6,100 (73.1)	5,880 (74.4)	5,410 (75.6)	4,650 (76.1)
65	5,810 (71.6)	5,620 (73.1)	5,370 (74.3)	4,650 (74.9)
70	4,900 (70)	4,810 (71.7)	4,650 (73)	4,500 (73.7)
75	4,050 (68.4)	3,950 (70.2)	3,860 (71.7)	3,740 (72.5)
80	3,310 (66.7)	3,220 (68.7)	3,130 (70.4)	3,040 (71.2)
85	2,680 (64.4)	2,590 (67.2)	2,500 (69)	2,410 (69.9)
90	2,120 (61.9)	2,030 (65.3)	1,940 (67.6)	1,860 (68.6)
95	1,630 (59.3)	1,540 (62.9)	1,450 (66.1)	1,370 (67.2)
100	1,190 (56.7)	1,110 (60.4)	1,020 (63.8)	930 (65.5)
105	800 (53.9)	720 (57.9)	630 (61.5)	540 (63.2)
Min. boom angle for indicated length (no load)	52.9°	56.9°	60.5°	62.2°
Max. boom length at 0° boom angle (no load)	47.6 ft.	47.6 ft.	47.6 ft.	47.6 ft.

NOTE: () Boom angles are in degrees.

80114806_15 V9

BOOM EXTENSION CAPACITY NOTES:

1. 36 ft. extension length may be used for single line lifting service only.
 2. For boom angles not shown, use the rating of the next lower boom angle.
- WARNING:** Operation of this machine with heavier loads than the capacities listed is strictly prohibited. Machine tipping with boom extension occurs rapidly and without advance warning.
3. Boom angle is the angle above or below horizontal of the longitudinal axis of the boom base section after lifting rated load.
 4. Capacities listed are with outriggers properly extended and vertical jacks set only.

RATED LIFTING CAPACITIES IN POUNDS
36 FT. FIXED OFFSETABLE BOOM EXTENSION
WITH 3,000 LB. COUNTERWEIGHT
ON OUTRIGGERS 75% EXTENDED - 360°
36 FT. EXTENSION AT 30° OFFSET ANGLE

Radius in Feet	Main Boom Length in Feet - Code #1225			
	120-G	132-H	144-J	150.5
50	5,660 (78.8)			
55	5,530 (77.3)	5,440 (78.4)		
60	5,420 (75.7)	5,350 (77)	5,190 (78.1)	
65	5,320 (74.1)	5,190 (75.6)	5,000 (76.8)	4,870 (77.4)
70	5,140 (72.5)	4,990 (74.1)	4,810 (75.5)	4,700 (76.2)
75	4,590 (70.8)	4,520 (72.6)	4,450 (74.2)	4,340 (74.9)
80	3,800 (68.8)	3,730 (71.1)	3,660 (72.8)	3,590 (73.6)
85	3,110 (66.1)	3,050 (69.5)	2,980 (71.4)	2,910 (72.3)
90	2,510 (63.4)	2,450 (67.2)	2,380 (70)	2,310 (71)
95	1,970 (60.6)	1,910 (64.6)	1,850 (68.1)	1,780 (69.6)
100	1,500 (57.7)	1,440 (62)	1,380 (65.7)	1,310 (67.5)
105	1,070 (54.6)	1,020 (59.3)	950 (63.3)	890 (65.2)
110	680 (51.5)	630 (56.5)	570 (60.8)	510 (62.8)
Min. boom angle for indicated length (no load)	50.5°	55.5°	59.8°	61.8°
Max. boom length at 0° boom angle (no load)	47.6 ft.	47.6 ft.	47.6 ft.	47.6 ft.

NOTE: () Boom angles are in degrees.

80114806_30 V9

BOOM EXTENSION CAPACITY NOTES:

1. 36 ft. extension length may be used for single line lifting service only.
 2. For boom angles not shown, use the rating of the next lower boom angle.
- WARNING:** Operation of this machine with heavier loads than the capacities listed is strictly prohibited. Machine tipping with boom extension occurs rapidly and without advance warning.
3. Boom angle is the angle above or below horizontal of the longitudinal axis of the boom base section after lifting rated load.
 4. Capacities listed are with outriggers properly extended and vertical jacks set only.

RATED LIFTING CAPACITIES IN POUNDS

37 FT. - 151 FT. BOOM

WITH 3,000 LB. COUNTERWEIGHT

ON OUTRIGGERS 50% EXTENDED - 360°

Radius in Feet	Main Boom Length in Feet - Code #1401 or #1403 or #1405										
	36.8	48-A	60-B	72-C	84-D	96-E	108-F	120-G	132-H	144-J	150.5
6	110,000 (71.5)	41,500 (76.7)									
8	106,000 (68)	41,500 (74.2)	41,500 (78.2)								
10	92,400 (64.4)	41,500 (71.6)	41,500 (76.2)	41,500 (79.4)							
12	81,600 (60.7)	41,500 (69)	41,500 (74.2)	41,500 (77.8)							
15	55,800 (54.9)	41,500 (64.9)	41,500 (71.1)	41,500 (75.3)	39,700 (78)	33,200 (79.9)					
20	32,700 (43.7)	32,500 (57.8)	31,300 (65.8)	30,100 (71)	28,900 (74.5)	27,750 (77)	23,550 (79.3)				
25	20,550 (28.9)	21,650 (49.9)	21,850 (60.3)	21,250 (66.7)	20,600 (71)	19,950 (74.1)	19,300 (76.7)	18,600 (78.9)			
30		15,000 (40.5)	15,550 (54.3)	15,750 (62.1)	15,400 (67.4)	15,000 (71.1)	14,550 (74.2)	14,150 (76.7)	13,800 (78.4)	11,300 (79.9)	
35		10,700 (28.5)	11,300 (47.6)	11,600 (57.2)	11,800 (63.6)	11,550 (68)	11,250 (71.5)	11,000 (74.3)	10,700 (76.4)	10,400 (78)	10,050 (78.8)
40			8,460 (39.6)	8,790 (52)	8,970 (59.5)	9,040 (64.8)	8,840 (68.8)	8,650 (72)	8,450 (74.3)	8,230 (76.1)	8,050 (77)
45			6,260 (30)	6,650 (46.1)	6,820 (55.3)	6,960 (61.4)	6,960 (66.1)	6,820 (69.6)	6,680 (72.1)	6,510 (74.2)	6,360 (75.2)
50			4,580 (15.5)	4,990 (39.2)	5,180 (50.7)	5,320 (57.8)	5,400 (63)	5,370 (67.1)	5,260 (70)	5,130 (72.3)	5,000 (73.4)
55				3,660 (31.1)	3,900 (45.2)	4,030 (54)	4,100 (59.8)	4,170 (64.4)	4,110 (67.8)	4,010 (70.3)	3,890 (71.5)
60				2,590 (20.4)	2,830 (39.1)	2,990 (49.9)	3,060 (56.5)	3,130 (61.5)	3,150 (65.4)	3,060 (68.3)	2,960 (69.6)
65					1,950 (32)	2,130 (44.8)	2,200 (53)	2,260 (58.5)	2,310 (62.8)	2,270 (66.2)	2,170 (67.7)
70					1,200 (23.3)	1,380 (39.2)	1,480 (48.9)	1,540 (55.4)	1,590 (60.2)	1,590 (63.9)	1,500 (65.6)
75					590 (8.2)	750 (32.9)	870 (44.2)	930 (52.1)	970 (57.4)	990 (61.5)	910 (63.4)
Min. boom angle for indicated length (no load)						31.9°	43.2°	51.1°	56.4°	60.5°	62.4°
Max. boom length at 0° boom angle (no load)						83.6 ft.					

NOTE: () Boom angles are in degrees.

Boom Angle	Main Boom Length in Feet										
	36.8	48-A	60-B	72-C	84-D	96-E	108-F	120-G	132-H	144-J	150.5
0°	14,400 (28.3)	8,010 (39.5)	4,160 (51.5)	1,970 (63.5)	540 (75.5)						

NOTE: () Reference radii in feet.

80114737 V9

Rated Load Reductions from main boom capacity when lifting over main boom nose with:											
26-45' tele. erected (retracted)	2450	2350	2250	2200	2150	2150	2100	2100	2050	2050	2050
26-45' tele. erected (extended)	2800	2600	2450	2350	2300	2250	2200	2200	2150	2150	2150
36' lattice	2000	1850	1750	1700	1650	1600	1600	1550	1550	1550	1500

**RATED LIFTING CAPACITIES IN POUNDS
36 FT. FIXED OFFSETABLE BOOM EXTENSION
WITH 3,000 LB. COUNTERWEIGHT
ON OUTRIGGERS 50% EXTENDED - 360°
36 FT. EXTENSION AT 0° OFFSET ANGLE**

Radius in Feet	Main Boom Length in Feet - Code #1415			
	120-G	132-H	144-J	150.5
30	7,640 (78.4)			
35	7,640 (76.9)	6,310 (78.5)	5,060 (79.9)	4,300 (80)
40	7,640 (75.4)	6,310 (77)	5,060 (78.5)	4,300 (78.8)
45	7,150 (73.9)	6,310 (75.6)	5,060 (77.2)	4,300 (77.6)
50	5,800 (72.3)	5,510 (74.1)	5,060 (75.8)	4,300 (76.3)
55	4,690 (70.7)	4,430 (72.7)	4,180 (74.5)	4,000 (75.1)
60	3,760 (69.1)	3,520 (71.2)	3,300 (73.1)	3,130 (73.8)
65	2,970 (67.4)	2,760 (69.7)	2,540 (71.7)	2,390 (72.6)
70	2,300 (65.7)	2,090 (68.1)	1,900 (70.2)	1,750 (71.3)
75	1,680 (64)	1,520 (66.5)	1,330 (68.8)	1,190 (70)
80	1,140 (62.2)	1,020 (64.9)	840 (67.3)	700 (68.6)
85	680 (59.9)	560 (63.2)		
Min. boom angle for indicated length (no load)	58.9°	62.2°	66.3°	67.6°
Max. boom length at 0° boom angle (no load)	47.6 ft.	47.6 ft.	47.6 ft.	47.6 ft.

NOTE: () Boom angles are in degrees.

80114807_0 V9

BOOM EXTENSION CAPACITY NOTES:

1. 36 ft. extension length may be used for single line lifting service only.
2. For boom angles not shown, use the rating of the next lower boom angle.

WARNING: Operation of this machine with heavier loads than the capacities listed is strictly prohibited. Machine tipping with boom extension occurs rapidly and without advance warning.
3. Boom angle is the angle above or below horizontal of the longitudinal axis of the boom base section after lifting rated load.
4. Capacities listed are with outriggers properly extended and vertical jacks set only.

**RATED LIFTING CAPACITIES IN POUNDS
36 FT. FIXED OFFSETABLE BOOM EXTENSION
WITH 3,000 LB. COUNTERWEIGHT
ON OUTRIGGERS 50% EXTENDED - 360°
36 FT. EXTENSION AT 15° OFFSET ANGLE**

Radius in Feet	Main Boom Length in Feet - Code #1420			
	120-G	132-H	144-J	150.5
40	7,000 (79)			
45	6,730 (77.5)			
50	6,540 (76.1)	6,400 (77.1)		
55	5,590 (74.6)	5,350 (75.8)	5,120 (76.8)	4,650 (77.3)
60	4,570 (73.1)	4,360 (74.4)	4,140 (75.6)	3,990 (76.1)
65	3,710 (71.6)	3,510 (73.1)	3,310 (74.3)	3,170 (74.9)
70	2,960 (70)	2,780 (71.7)	2,600 (73)	2,460 (73.7)
75	2,280 (68.4)	2,150 (70.2)	1,980 (71.7)	1,850 (72.5)
80	1,690 (66.7)	1,590 (68.7)	1,430 (70.4)	1,310 (71.2)
85	1,170 (64.4)	1,090 (67.2)	950 (69)	830 (69.9)
90	720 (61.9)	630 (65.3)	520 (67.6)	
Min. boom angle for indicated length (no load)	60.9°	64.3°	66.6°	68.9°
Max. boom length at 0° boom angle (no load)	47.6 ft.	47.6 ft.	47.6 ft.	47.6 ft.

NOTE: () Boom angles are in degrees.

80114807_15 V9

BOOM EXTENSION CAPACITY NOTES:

1. 36 ft. extension length may be used for single line lifting service only.
 2. For boom angles not shown, use the rating of the next lower boom angle.
- WARNING:** Operation of this machine with heavier loads than the capacities listed is strictly prohibited. Machine tipping with boom extension occurs rapidly and without advance warning.
3. Boom angle is the angle above or below horizontal of the longitudinal axis of the boom base section after lifting rated load.
 4. Capacities listed are with outriggers properly extended and vertical jacks set only.

**RATED LIFTING CAPACITIES IN POUNDS
36 FT. FIXED OFFSETABLE BOOM EXTENSION
WITH 3,000 LB. COUNTERWEIGHT
ON OUTRIGGERS 50% EXTENDED - 360°
36 FT. EXTENSION AT 30° OFFSET ANGLE**

Radius in Feet	Main Boom Length in Feet - Code #1425			
	120-G	132-H	144-J	150.5
50	5,660 (78.8)			
55	5,530 (77.3)	5,440 (78.4)		
60	5,320 (75.7)	5,120 (77)	4,920 (78.1)	
65	4,370 (74.1)	4,190 (75.6)	4,010 (76.8)	3,880 (77.4)
70	3,550 (72.5)	3,400 (74.1)	3,230 (75.5)	3,110 (76.2)
75	2,800 (70.8)	2,700 (72.6)	2,550 (74.2)	2,430 (74.9)
80	2,160 (68.8)	2,090 (71.1)	1,950 (72.8)	1,840 (73.6)
85	1,600 (66.1)	1,530 (69.5)	1,420 (71.4)	1,320 (72.3)
90	1,100 (63.4)	1,040 (67.2)	950 (70)	850 (71)
95	660 (60.6)	600 (64.6)	520 (68.1)	
Min. boom angle for indicated length (no load)	59.6°	63.6°	67.1°	70°
Max. boom length at 0° boom angle (no load)	47.6 ft.	47.6 ft.	47.6 ft.	47.6 ft.

NOTE: () Boom angles are in degrees.

80114807_30 V9

BOOM EXTENSION CAPACITY NOTES:

1. 36 ft. extension length may be used for single line lifting service only.
 2. For boom angles not shown, use the rating of the next lower boom angle.
- WARNING:** Operation of this machine with heavier loads than the capacities listed is strictly prohibited. Machine tipping with boom extension occurs rapidly and without advance warning.
3. Boom angle is the angle above or below horizontal of the longitudinal axis of the boom base section after lifting rated load.
 4. Capacities listed are with outriggers properly extended and vertical jacks set only.

RATED LIFTING CAPACITIES IN POUNDS

37 FT. - 151 FT. BOOM

WITH 3,000 LB. COUNTERWEIGHT

ON OUTRIGGERS 0% EXTENDED - 360°

Radius in Feet	Main Boom Length in Feet - Code #1801 or #1803 or #1805						
	36.8	48-A	60-B	72-C	84-D	96-E	108-F
6	72,050 (71.5)	41,500 (76.7)					
8	47,350 (68)	41,500 (74.2)	40,150 (78.2)				
10	34,200 (64.4)	32,300 (71.6)	30,300 (76.2)	28,350 (79.4)			
12	26,000 (60.7)	25,000 (69)	23,800 (74.2)	22,550 (77.8)			
15	18,150 (54.9)	17,900 (64.9)	17,300 (71.1)	16,650 (75.3)	15,900 (78)	15,150 (79.9)	
20	10,600 (43.7)	11,000 (57.8)	10,900 (65.8)	10,650 (71)	10,250 (74.5)	9,930 (77)	9,540 (79.3)
25	5,940 (28.9)	6,850 (49.9)	7,080 (60.3)	7,010 (66.7)	6,830 (71)	6,650 (74.1)	6,410 (76.7)
30		4,080 (40.5)	4,470 (54.3)	4,570 (62.1)	4,490 (67.4)	4,400 (71.1)	4,260 (74.2)
35		2,060 (28.5)	2,580 (47.6)	2,790 (57.2)	2,800 (63.6)	2,760 (68)	2,680 (71.5)
40			1,170 (39.6)	1,410 (52)	1,520 (59.5)	1,520 (64.8)	1,470 (68.8)
45						540 (61.4)	520 (66.1)
Min. boom angle for indicated length (no load)			38.6°	51°	58.5°	60.4°	65.1°
Max. boom length at 0° boom angle (no load)			47.6 ft.				

NOTE: () Boom angles are in degrees.

Boom Angle	Main Boom Length in Feet						
	36.8	48-A	60-B	72-C	84-D	96-E	108-F
0°	3,880 (28.3)	740 (39.5)					

NOTE: () Reference radii in feet. 80114738 V9

Rated Load Reductions from main boom capacity when lifting over main boom nose with:							
26-45' tele. erected (retracted)	2450	2350	2250	2200	2150	2150	2100
26-45' tele. erected (extended)	2800	2600	2450	2350	2300	2250	2200
36' lattice	2000	1850	1750	1700	1650	1600	1600

RATED LIFTING CAPACITIES IN POUNDS

37 FT. - 151 FT. BOOM

WITH 0 LB. COUNTERWEIGHT

ON OUTRIGGERS FULLY EXTENDED - 360°

Radius in Feet	Main Boom Length in Feet - Code #8001 or #8003 or #8005											
	36.8	48-A	60-B	72-C	84-D	96-E	108-F	120-G	132-H	144-J	150.5	
6	110,000 (71.5)	41,500 (76.7)										
8	104,500 (68)	41,500 (74.2)	41,500 (78.2)									
10	91,650 (64.4)	41,500 (71.6)	41,500 (76.2)	41,500 (79.4)								
12	81,200 (60.7)	41,500 (69)	41,500 (74.2)	41,500 (77.8)								
15	68,950 (54.9)	41,500 (64.9)	41,500 (71.1)	41,500 (75.3)	39,700 (78)	33,200 (79.9)						
20	49,700 (43.7)	41,500 (57.8)	41,500 (65.8)	41,500 (71)	36,100 (74.5)	30,250 (77)	23,550 (79.3)					
25	36,500 (28.9)	37,700 (49.9)	38,500 (60.3)	38,150 (66.7)	32,950 (71)	27,400 (74.1)	21,150 (76.7)	18,600 (78.9)				
30		28,250 (40.5)	29,000 (54.3)	29,700 (62.1)	29,800 (67.4)	24,700 (71.1)	19,100 (74.2)	16,950 (76.7)	14,500 (78.4)	11,300 (79.9)		
35		20,550 (28.5)	21,300 (47.6)	22,450 (57.2)	22,100 (63.6)	22,200 (68)	17,250 (71.5)	15,450 (74.3)	13,900 (76.4)	11,300 (78)	10,050 (78.8)	
40			16,350 (39.6)	17,550 (52)	17,400 (59.5)	17,800 (64.8)	15,700 (68.8)	14,150 (72)	12,800 (74.3)	11,300 (76.1)	10,050 (77)	
45			12,850 (30)	13,950 (46.1)	13,900 (55.3)	14,500 (61.4)	14,000 (66.1)	12,750 (69.6)	11,750 (72.1)	10,700 (74.2)	10,050 (75.2)	
50			10,250 (15.5)	11,250 (39.2)	11,250 (50.7)	11,900 (57.8)	11,450 (63)	11,050 (67.1)	10,850 (70)	9,930 (72.3)	9,340 (73.4)	
55				9,170 (31.1)	8,750 (45.2)	9,850 (54)	9,510 (59.8)	9,540 (64.4)	9,150 (67.8)	9,110 (70.3)	8,410 (71.5)	
60				7,470 (20.4)	7,150 (39.1)	8,160 (49.9)	7,920 (56.5)	8,200 (61.5)	7,930 (65.4)	7,670 (68.3)	7,520 (69.6)	
65					5,850 (32)	6,750 (44.8)	6,610 (53)	7,000 (58.5)	6,730 (62.8)	6,470 (66.2)	6,680 (67.7)	
70					4,780 (23.3)	5,550 (39.2)	5,510 (48.9)	5,930 (55.4)	5,690 (60.2)	5,450 (63.9)	5,880 (65.6)	
75					3,900 (8.2)	4,530 (32.9)	4,080 (44.2)	4,960 (52.1)	4,770 (57.4)	4,580 (61.5)	5,120 (63.4)	
80						3,640 (25.4)	3,310 (39.1)	4,090 (48.2)	3,960 (54.6)	3,840 (59.1)	4,400 (61.2)	
85							2,860 (15)	2,640 (33.4)	3,290 (43.8)	3,230 (51.6)	3,180 (56.6)	3,700 (58.9)
90								2,060 (26.9)	2,560 (39.1)	2,170 (47.7)	2,200 (54)	3,040 (56.5)
95								1,560 (18.6)	1,890 (34)	1,660 (43.6)	1,680 (51)	2,410 (54)
100									1,270 (28.1)	1,210 (39.2)	1,230 (47.4)	1,810 (51.1)
105									700 (21.1)	800 (34.5)	820 (43.5)	1,230 (47.5)
110												680 (43.8)
Min. boom angle for indicated length (no load)							17.6°	20.1°	33.5°	42.5°	42.8°	
Max. boom length at 0° boom angle (no load)								95.6 ft.				

NOTE: () Boom angles are in degrees.

Boom Angle	Main Boom Length in Feet										
	36.8	48-A	60-B	72-C	84-D	96-E	108-F	120-G	132-H	144-J	150.5
0°	14,400 (28.3)	10,000 (39.5)	6,570 (51.5)	4,360 (63.5)	2,820 (75.5)	1,690 (87.5)					

NOTE: () Reference radii in feet.

80114724 V9

Rated Load Reductions from main boom capacity when lifting over main boom nose with:											
26-45' tele. erected (retracted)	2450	2350	2250	2200	2150	2150	2100	2100	2050	2050	2050
26-45' tele. erected (extended)	2800	2600	2450	2350	2300	2250	2200	2200	2150	2150	2150
36' lattice	2000	1850	1750	1700	1650	1600	1600	1550	1550	1550	1500

RATED LIFTING CAPACITIES IN POUNDS
36 FT. FIXED OFFSETABLE BOOM EXTENSION
WITH 0 LB. COUNTERWEIGHT
ON OUTRIGGERS FULLY EXTENDED - 360°
36 FT. EXTENSION AT 0° OFFSET ANGLE

Radius in Feet	Main Boom Length in Feet - Code #8015			
	120-G	132-H	144-J	150.5
30	7,640 (78.4)			
35	7,640 (76.9)	6,310 (78.5)	5,060 (79.9)	4,300 (80)
40	7,640 (75.4)	6,310 (77)	5,060 (78.5)	4,300 (78.8)
45	7,640 (73.9)	6,310 (75.6)	5,060 (77.2)	4,300 (77.6)
50	7,640 (72.3)	6,310 (74.1)	5,060 (75.8)	4,300 (76.3)
55	7,260 (70.7)	6,310 (72.7)	5,060 (74.5)	4,300 (75.1)
60	6,880 (69.1)	6,310 (71.2)	5,060 (73.1)	4,300 (73.8)
65	6,520 (67.4)	6,260 (69.7)	5,060 (71.7)	4,300 (72.6)
70	5,930 (65.7)	5,800 (68.1)	5,060 (70.2)	4,300 (71.3)
75	4,990 (64)	4,870 (66.5)	4,750 (68.8)	4,300 (70)
80	4,200 (62.2)	4,080 (64.9)	3,960 (67.3)	3,860 (68.6)
85	3,520 (59.9)	3,390 (63.2)	3,280 (65.7)	3,180 (67.2)
90	2,920 (57.4)	2,800 (61.3)	2,680 (64.2)	2,580 (65.8)
95	2,400 (54.8)	2,280 (59.1)	2,160 (62.6)	2,060 (64.1)
100	1,930 (52.2)	1,810 (56.8)	1,700 (60.6)	1,600 (62.2)
105	1,520 (49.4)	1,400 (54.4)	1,290 (58.5)	1,190 (60.2)
110	1,160 (46.5)	1,030 (51.9)	920 (56.3)	820 (58.2)
115	830 (43.4)	700 (49.4)	590 (54.1)	
120	530 (40.1)			
Min. boom angle for indicated length (no load)	39.1°	48.4°	53.1°	57.2°
Max. boom length at 0° boom angle (no load)	47.6 ft.	47.6 ft.	47.6 ft.	47.6 ft.

NOTE: () Boom angles are in degrees.

80114796_0 V9

BOOM EXTENSION CAPACITY NOTES:

1. 36 ft. extension length may be used for single line lifting service only.
2. For boom angles not shown, use the rating of the next lower boom angle.

WARNING: Operation of this machine with heavier loads than the capacities listed is strictly prohibited. Machine tipping with boom extension occurs rapidly and without advance warning.
3. Boom angle is the angle above or below horizontal of the longitudinal axis of the boom base section after lifting rated load.
4. Capacities listed are with outriggers properly extended and vertical jacks set only.

RATED LIFTING CAPACITIES IN POUNDS
36 FT. FIXED OFFSETABLE BOOM EXTENSION
WITH 0 LB. COUNTERWEIGHT
ON OUTRIGGERS FULLY EXTENDED - 360°
36 FT. EXTENSION AT 15° OFFSET ANGLE

Radius in Feet	Main Boom Length in Feet - Code #8020			
	120-G	132-H	144-J	150.5
40	7,000 (79)			
45	6,730 (77.5)			
50	6,540 (76.1)	6,400 (77.1)		
55	6,360 (74.6)	6,150 (75.8)	5,410 (76.8)	4,650 (77.3)
60	6,100 (73.1)	5,880 (74.4)	5,410 (75.6)	4,650 (76.1)
65	5,810 (71.6)	5,620 (73.1)	5,370 (74.3)	4,650 (74.9)
70	5,550 (70)	5,380 (71.7)	5,160 (73)	4,650 (73.7)
75	5,300 (68.4)	5,150 (70.2)	4,960 (71.7)	4,650 (72.5)
80	4,770 (66.7)	4,670 (68.7)	4,580 (70.4)	4,490 (71.2)
85	4,030 (64.4)	3,930 (67.2)	3,840 (69)	3,750 (69.9)
90	3,380 (61.9)	3,290 (65.3)	3,200 (67.6)	3,110 (68.6)
95	2,820 (59.3)	2,720 (62.9)	2,630 (66.1)	2,550 (67.2)
100	2,310 (56.7)	2,220 (60.4)	2,130 (63.8)	2,050 (65.5)
105	1,860 (53.9)	1,770 (57.9)	1,680 (61.5)	1,600 (63.2)
110	1,460 (51)	1,370 (55.3)	1,280 (59.1)	1,200 (60.9)
115	1,100 (47.9)	1,010 (52.6)	920 (56.6)	840 (58.6)
120	770 (44.6)	680 (49.8)	590 (54.1)	510 (56.1)
Min. boom angle for indicated length (no load)	43.6°	48.8°	53.1°	55.1°
Max. boom length at 0° boom angle (no load)	47.6 ft.	47.6 ft.	47.6 ft.	47.6 ft.

NOTE: () Boom angles are in degrees.

80114796_15 V9

BOOM EXTENSION CAPACITY NOTES:

- 36 ft. extension length may be used for single line lifting service only.
- For boom angles not shown, use the rating of the next lower boom angle.
WARNING: Operation of this machine with heavier loads than the capacities listed is strictly prohibited. Machine tipping with boom extension occurs rapidly and without advance warning.
- Boom angle is the angle above or below horizontal of the longitudinal axis of the boom base section after lifting rated load.
- Capacities listed are with outriggers properly extended and vertical jacks set only.

**RATED LIFTING CAPACITIES IN POUNDS
36 FT. FIXED OFFSETABLE BOOM EXTENSION
WITH 0 LB. COUNTERWEIGHT
ON OUTRIGGERS FULLY EXTENDED - 360°
36 FT. EXTENSION AT 30° OFFSET ANGLE**

Radius in Feet	Main Boom Length in Feet - Code #8025			
	120-G	132-H	144-J	150.5
50	5,660 (78.8)			
55	5,530 (77.3)	5,440 (78.4)		
60	5,420 (75.7)	5,350 (77)	5,190 (78.1)	
65	5,320 (74.1)	5,190 (75.6)	5,000 (76.8)	4,870 (77.4)
70	5,140 (72.5)	4,990 (74.1)	4,810 (75.5)	4,700 (76.2)
75	4,940 (70.8)	4,800 (72.6)	4,640 (74.2)	4,540 (74.9)
80	4,760 (68.8)	4,630 (71.1)	4,470 (72.8)	4,380 (73.6)
85	4,460 (66.1)	4,400 (69.5)	4,320 (71.4)	4,230 (72.3)
90	3,770 (63.4)	3,710 (67.2)	3,640 (70)	3,570 (71)
95	3,160 (60.6)	3,100 (64.6)	3,030 (68.1)	2,960 (69.6)
100	2,620 (57.7)	2,560 (62)	2,490 (65.7)	2,420 (67.5)
105	2,130 (54.6)	2,080 (59.3)	2,010 (63.3)	1,940 (65.2)
110	1,690 (51.5)	1,640 (56.5)	1,580 (60.8)	1,510 (62.8)
115	1,300 (48.1)	1,250 (53.6)	1,190 (58.2)	1,120 (60.4)
120	930 (44.5)	890 (50.6)	830 (55.5)	760 (57.8)
125	600 (40.6)	560 (47.4)	500 (52.8)	
Min. boom angle for indicated length (no load)	39.6°	46.4°	51.8°	56.8°
Max. boom length at 0° boom angle (no load)	47.6 ft.	47.6 ft.	47.6 ft.	47.6 ft.

NOTE: () Boom angles are in degrees.

80114796_30 V9

BOOM EXTENSION CAPACITY NOTES:

1. 36 ft. extension length may be used for single line lifting service only.
2. For boom angles not shown, use the rating of the next lower boom angle.

WARNING: Operation of this machine with heavier loads than the capacities listed is strictly prohibited. Machine tipping with boom extension occurs rapidly and without advance warning.
3. Boom angle is the angle above or below horizontal of the longitudinal axis of the boom base section after lifting rated load.
4. Capacities listed are with outriggers properly extended and vertical jacks set only.

RATED LIFTING CAPACITIES IN POUNDS

37 FT. - 151 FT. BOOM

WITH 0 LB. COUNTERWEIGHT

ON OUTRIGGERS FULLY EXTENDED - OVER REAR

Radius in Feet	Main Boom Length in Feet - Code #8026 or #8028 or #8030											
	36.8	48-A	60-B	72-C	84-D	96-E	108-F	120-G	132-H	144-J	150.5	
6	110,000 (71.5)	41,500 (76.7)										
8	106,500 (68)	41,500 (74.2)	41,500 (78.2)									
10	96,050 (64.4)	41,500 (71.6)	41,500 (76.2)	41,500 (79.4)								
12	86,750 (60.7)	41,500 (69)	41,500 (74.2)	41,500 (77.8)								
15	74,900 (54.9)	41,500 (64.9)	41,500 (71.1)	41,500 (75.3)	39,700 (78)	33,200 (79.9)						
20	53,050 (43.7)	41,500 (57.8)	41,500 (65.8)	41,500 (71)	36,100 (74.5)	30,250 (77)	23,550 (79.3)					
25	37,200 (28.9)	41,000 (49.9)	41,500 (60.3)	38,150 (66.7)	32,950 (71)	27,400 (74.1)	21,150 (76.7)	18,600 (78.9)				
30		32,200 (40.5)	32,850 (54.3)	33,550 (62.1)	30,250 (67.4)	24,700 (71.1)	19,100 (74.2)	16,950 (76.7)	14,500 (78.4)	11,300 (79.9)		
35		24,250 (28.5)	24,950 (47.6)	26,300 (57.2)	25,550 (63.6)	22,350 (68)	17,250 (71.5)	15,450 (74.3)	13,900 (76.4)	11,300 (78)	10,050 (78.8)	
40			19,600 (39.6)	21,150 (52)	20,150 (59.5)	20,250 (64.8)	15,700 (68.8)	14,150 (72)	12,800 (74.3)	11,300 (76.1)	10,050 (77)	
45			15,800 (30)	17,350 (46.1)	16,950 (55.3)	17,050 (61.4)	14,350 (66.1)	12,950 (69.6)	11,750 (72.1)	10,700 (74.2)	10,050 (75.2)	
50			12,900 (15.5)	14,350 (39.2)	14,100 (50.7)	14,500 (57.8)	13,200 (63)	11,900 (67.1)	10,850 (70)	9,930 (72.3)	9,470 (73.4)	
55				12,000 (31.1)	11,850 (45.2)	12,400 (54)	11,800 (59.8)	10,700 (64.4)	10,000 (67.8)	9,200 (70.3)	8,780 (71.5)	
60				10,050 (20.4)	10,000 (39.1)	10,600 (49.9)	10,100 (56.5)	9,610 (61.5)	9,300 (65.4)	8,540 (68.3)	8,160 (69.6)	
65					7,920 (32)	9,140 (44.8)	8,710 (53)	8,590 (58.5)	8,470 (62.8)	7,940 (66.2)	7,590 (67.7)	
70					6,710 (23.3)	7,840 (39.2)	7,510 (48.9)	7,630 (55.4)	7,400 (60.2)	7,160 (63.9)	7,030 (65.6)	
75					5,380 (8.2)	6,720 (32.9)	6,480 (44.2)	6,750 (52.1)	6,450 (57.4)	6,140 (61.5)	5,990 (63.4)	
80						5,730 (25.4)	5,590 (39.1)	5,920 (48.2)	5,590 (54.6)	5,250 (59.1)	5,090 (61.2)	
85						4,850 (15)	4,220 (33.4)	5,150 (43.8)	4,810 (51.6)	4,470 (56.6)	4,320 (58.9)	
90							3,560 (26.9)	4,420 (39.1)	4,100 (47.7)	3,780 (54)	3,630 (56.5)	
95							2,980 (18.6)	3,740 (34)	3,450 (43.6)	3,160 (51)	3,030 (54)	
100								3,100 (28.1)	2,550 (39.2)	2,570 (47.4)	2,490 (51.1)	
105								2,490 (21.1)	2,080 (34.5)	2,100 (43.5)	2,000 (47.5)	
110								1,920 (10.5)	1,660 (29.2)	1,650 (39.4)	1,570 (43.8)	
115									1,290 (23)	1,240 (35)	1,170 (39.8)	
120									890 (14.8)	860 (30.1)	810 (35.6)	
125										510 (24.6)		
Min. boom angle for indicated length (no load)							9.5°	9.5°	13.8°	23.6°	34.6°	
Max. boom length at 0° boom angle (no load)								95.6 ft.				

NOTE: () Boom angles are in degrees.

Boom Angle	Main Boom Length in Feet										
	36.8	48-A	60-B	72-C	84-D	96-E	108-F	120-G	132-H	144-J	150.5
0°	14,400 (28.3)	10,000 (39.5)	6,570 (51.5)	4,360 (63.5)	2,820 (75.5)	1,690 (87.5)					

NOTE: () Reference radii in feet.

80114725 V9

Rated Load Reductions from main boom capacity when lifting over main boom nose with:											
26-45' tele. erected (retracted)	2450	2350	2250	2200	2150	2150	2100	2100	2050	2050	2050
26-45' tele. erected (extended)	2800	2600	2450	2350	2300	2250	2200	2200	2150	2150	2150
36' lattice	2000	1850	1750	1700	1650	1600	1600	1550	1550	1550	1500

**RATED LIFTING CAPACITIES IN POUNDS
36 FT. FIXED OFFSETABLE BOOM EXTENSION
WITH 0 LB. COUNTERWEIGHT
ON OUTRIGGERS FULLY EXTENDED - OVER REAR
36 FT. EXTENSION AT 0° OFFSET ANGLE**

Radius in Feet	Main Boom Length in Feet - Code #8040			
	120-G	132-H	144-J	150.5
30	7,640 (78.4)			
35	7,640 (76.9)	6,310 (78.5)	5,060 (79.9)	4,300 (80)
40	7,640 (75.4)	6,310 (77)	5,060 (78.5)	4,300 (78.8)
45	7,640 (73.9)	6,310 (75.6)	5,060 (77.2)	4,300 (77.6)
50	7,640 (72.3)	6,310 (74.1)	5,060 (75.8)	4,300 (76.3)
55	7,260 (70.7)	6,310 (72.7)	5,060 (74.5)	4,300 (75.1)
60	6,880 (69.1)	6,310 (71.2)	5,060 (73.1)	4,300 (73.8)
65	6,520 (67.4)	6,260 (69.7)	5,060 (71.7)	4,300 (72.6)
70	6,180 (65.7)	5,960 (68.1)	5,060 (70.2)	4,300 (71.3)
75	5,870 (64)	5,690 (66.5)	5,060 (68.8)	4,300 (70)
80	5,580 (62.2)	5,400 (64.9)	4,990 (67.3)	4,300 (68.6)
85	5,050 (59.9)	4,930 (63.2)	4,680 (65.7)	4,300 (67.2)
90	4,370 (57.4)	4,250 (61.3)	4,130 (64.2)	4,040 (65.8)
95	3,770 (54.8)	3,650 (59.1)	3,540 (62.6)	3,440 (64.1)
100	3,240 (52.2)	3,120 (56.8)	3,010 (60.6)	2,910 (62.2)
105	2,770 (49.4)	2,650 (54.4)	2,530 (58.5)	2,440 (60.2)
110	2,340 (46.5)	2,220 (51.9)	2,110 (56.3)	2,010 (58.2)
115	1,960 (43.4)	1,840 (49.4)	1,720 (54.1)	1,630 (56.1)
120	1,610 (40.1)	1,490 (46.7)	1,380 (51.8)	1,280 (53.9)
125	1,300 (36.6)	1,180 (43.9)	1,060 (49.5)	960 (51.2)
130	1,020 (32.7)	890 (40.9)	770 (47)	680 (48.3)
135	760 (27.8)	630 (37.6)	510 (44.4)	
140	530 (20.9)			
Min. boom angle for indicated length (no load)	19.9°	36.6°	43.4°	47.3°
Max. boom length at 0° boom angle (no load)	47.6 ft.	47.6 ft.	47.6 ft.	47.6 ft.

NOTE: () Boom angles are in degrees.

80114813_0 V9

BOOM EXTENSION CAPACITY NOTES:

1. 36 ft. extension length may be used for single line lifting service only.
 2. For boom angles not shown, use the rating of the next lower boom angle.
- WARNING:** Operation of this machine with heavier loads than the capacities listed is strictly prohibited. Machine tipping with boom extension occurs rapidly and without advance warning.
3. Boom angle is the angle above or below horizontal of the longitudinal axis of the boom base section after lifting rated load.
 4. Capacities listed are with outriggers properly extended and vertical jacks set only.

**RATED LIFTING CAPACITIES IN POUNDS
36 FT. FIXED OFFSETABLE BOOM EXTENSION
WITH 0 LB. COUNTERWEIGHT
ON OUTRIGGERS FULLY EXTENDED - OVER REAR
36 FT. EXTENSION AT 15° OFFSET ANGLE**

Radius in Feet	Main Boom Length in Feet - Code #8045			
	120-G	132-H	144-J	150.5
40	7,000 (79)			
45	6,730 (77.5)			
50	6,540 (76.1)	6,400 (77.1)		
55	6,360 (74.6)	6,150 (75.8)	5,410 (76.8)	4,650 (77.3)
60	6,100 (73.1)	5,880 (74.4)	5,410 (75.6)	4,650 (76.1)
65	5,810 (71.6)	5,620 (73.1)	5,370 (74.3)	4,650 (74.9)
70	5,550 (70)	5,380 (71.7)	5,160 (73)	4,650 (73.7)
75	5,300 (68.4)	5,150 (70.2)	4,960 (71.7)	4,650 (72.5)
80	5,070 (66.7)	4,930 (68.7)	4,760 (70.4)	4,650 (71.2)
85	4,860 (64.4)	4,730 (67.2)	4,580 (69)	4,480 (69.9)
90	4,660 (61.9)	4,550 (65.3)	4,400 (67.6)	4,250 (68.6)
95	4,180 (59.3)	4,090 (62.9)	4,000 (66.1)	3,920 (67.2)
100	3,610 (56.7)	3,520 (60.4)	3,430 (63.8)	3,350 (65.5)
105	3,100 (53.9)	3,010 (57.9)	2,920 (61.5)	2,840 (63.2)
110	2,640 (51)	2,550 (55.3)	2,470 (59.1)	2,390 (60.9)
115	2,230 (47.9)	2,140 (52.6)	2,050 (56.6)	1,970 (58.6)
120	1,850 (44.6)	1,760 (49.8)	1,680 (54.1)	1,600 (56.1)
125	1,500 (41.1)	1,420 (46.8)	1,330 (51.4)	1,250 (53.6)
130	1,190 (37.2)	1,110 (43.7)	1,020 (48.7)	940 (51)
135	900 (31.6)	820 (40.3)	730 (45.8)	650 (48.3)
140	630 (24.1)	550 (36.6)		
Min. boom angle for indicated length (no load)	23.1°	35.6°	44.8°	47.3°
Max. boom length at 0° boom angle (no load)	47.6 ft.	47.6 ft.	47.6 ft.	47.6 ft.

NOTE: () Boom angles are in degrees.

80114813_15 V9

BOOM EXTENSION CAPACITY NOTES:

- 36 ft. extension length may be used for single line lifting service only.
- For boom angles not shown, use the rating of the next lower boom angle.
WARNING: Operation of this machine with heavier loads than the capacities listed is strictly prohibited. Machine tipping with boom extension occurs rapidly and without advance warning.
- Boom angle is the angle above or below horizontal of the longitudinal axis of the boom base section after lifting rated load.
- Capacities listed are with outriggers properly extended and vertical jacks set only.

**RATED LIFTING CAPACITIES IN POUNDS
36 FT. FIXED OFFSETABLE BOOM EXTENSION
WITH 0 LB. COUNTERWEIGHT
ON OUTRIGGERS FULLY EXTENDED - OVER REAR
36 FT. EXTENSION AT 30° OFFSET ANGLE**

Radius in Feet	Main Boom Length in Feet - Code #8050			
	120-G	132-H	144-J	150.5
50	5,660 (78.8)			
55	5,530 (77.3)	5,440 (78.4)		
60	5,420 (75.7)	5,350 (77)	5,190 (78.1)	
65	5,320 (74.1)	5,190 (75.6)	5,000 (76.8)	4,870 (77.4)
70	5,140 (72.5)	4,990 (74.1)	4,810 (75.5)	4,700 (76.2)
75	4,940 (70.8)	4,800 (72.6)	4,640 (74.2)	4,540 (74.9)
80	4,760 (68.8)	4,630 (71.1)	4,470 (72.8)	4,380 (73.6)
85	4,580 (66.1)	4,460 (69.5)	4,320 (71.4)	4,230 (72.3)
90	4,420 (63.4)	4,310 (67.2)	4,170 (70)	4,090 (71)
95	4,270 (60.6)	4,160 (64.6)	4,030 (68.1)	3,960 (69.6)
100	3,910 (57.7)	3,850 (62)	3,790 (65.7)	3,720 (67.5)
105	3,360 (54.6)	3,310 (59.3)	3,250 (63.3)	3,180 (65.2)
110	2,870 (51.5)	2,820 (56.5)	2,760 (60.8)	2,690 (62.8)
115	2,420 (48.1)	2,370 (53.6)	2,320 (58.2)	2,250 (60.4)
120	2,010 (44.5)	1,970 (50.6)	1,910 (55.5)	1,850 (57.8)
125	1,640 (40.6)	1,600 (47.4)	1,540 (52.8)	1,480 (55.2)
130	1,290 (36)	1,250 (44)	1,210 (49.9)	1,140 (52.5)
135		940 (40.4)	890 (46.8)	830 (49.7)
140		640 (36.3)	600 (43.6)	540 (46.8)
Min. boom angle for indicated length (no load)	35°	35.3°	42.6°	45.8°
Max. boom length at 0° boom angle (no load)	47.6 ft.	47.6 ft.	47.6 ft.	47.6 ft.

NOTE: () Boom angles are in degrees.

80114813_30 V9

BOOM EXTENSION CAPACITY NOTES:

1. 36 ft. extension length may be used for single line lifting service only.
 2. For boom angles not shown, use the rating of the next lower boom angle.
- WARNING:** Operation of this machine with heavier loads than the capacities listed is strictly prohibited. Machine tipping with boom extension occurs rapidly and without advance warning.
3. Boom angle is the angle above or below horizontal of the longitudinal axis of the boom base section after lifting rated load.
 4. Capacities listed are with outriggers properly extended and vertical jacks set only.

RATED LIFTING CAPACITIES IN POUNDS

37 FT. - 151 FT. BOOM

WITH 0 LB. COUNTERWEIGHT

ON OUTRIGGERS 75% EXTENDED - 360°

Radius in Feet	Main Boom Length in Feet - Code #8201 or #8203 or #8205										
	36.8	48-A	60-B	72-C	84-D	96-E	108-F	120-G	132-H	144-J	150.5
6	110,000 (71.5)	41,500 (76.7)									
8	96,350 (68)	41,500 (74.2)	41,500 (78.2)								
10	83,950 (64.4)	41,500 (71.6)	41,500 (76.2)	41,500 (79.4)							
12	74,150 (60.7)	41,500 (69)	41,500 (74.2)	41,500 (77.8)							
15	61,650 (54.9)	41,500 (64.9)	41,500 (71.1)	41,500 (75.3)	39,700 (78)	33,200 (79.9)					
20	42,200 (43.7)	41,500 (57.8)	39,650 (65.8)	37,850 (71)	36,100 (74.5)	30,250 (77)	23,550 (79.3)				
25	26,100 (28.9)	27,100 (49.9)	26,950 (60.3)	26,100 (66.7)	25,200 (71)	24,350 (74.1)	21,150 (76.7)	18,600 (78.9)			
30		18,500 (40.5)	19,050 (54.3)	19,200 (62.1)	18,650 (67.4)	18,150 (71.1)	17,650 (74.2)	16,950 (76.7)	14,500 (78.4)	11,300 (79.9)	
35		13,250 (28.5)	13,800 (47.6)	14,150 (57.2)	14,300 (63.6)	14,000 (68)	13,600 (71.5)	13,300 (74.3)	12,950 (76.4)	11,300 (78)	10,050 (78.8)
40			10,350 (39.6)	10,650 (52)	10,850 (59.5)	10,950 (64.8)	10,700 (68.8)	10,500 (72)	10,250 (74.3)	10,000 (76.1)	9,790 (77)
45			7,840 (30)	8,160 (46.1)	8,340 (55.3)	8,490 (61.4)	8,540 (66.1)	8,370 (69.6)	8,200 (72.1)	8,000 (74.2)	7,820 (75.2)
50			5,880 (15.5)	6,260 (39.2)	6,440 (50.7)	6,580 (57.8)	6,660 (63)	6,700 (67.1)	6,560 (70)	6,410 (72.3)	6,260 (73.4)
55				4,780 (31.1)	4,960 (45.2)	5,090 (54)	5,170 (59.8)	5,240 (64.4)	5,240 (67.8)	5,120 (70.3)	4,990 (71.5)
60				3,550 (20.4)	3,770 (39.1)	3,900 (49.9)	3,980 (56.5)	4,050 (61.5)	4,100 (65.4)	4,050 (68.3)	3,940 (69.6)
65					2,800 (32)	2,930 (44.8)	3,000 (53)	3,070 (58.5)	3,120 (62.8)	3,140 (66.2)	3,050 (67.7)
70					1,960 (23.3)	2,120 (39.2)	2,190 (48.9)	2,260 (55.4)	2,300 (60.2)	2,330 (63.9)	2,280 (65.6)
75					1,260 (8.2)	1,430 (32.9)	1,510 (44.2)	1,570 (52.1)	1,620 (57.4)	1,640 (61.5)	1,590 (63.4)
80						830 (25.4)	920 (39.1)	980 (48.2)	1,030 (54.6)	1,050 (59.1)	1,000 (61.2)
85									520 (51.6)	530 (56.6)	
Min. boom angle for indicated length (no load)						24.4°	38.1°	47.2°	50.6°	55.6°	60.2°
Max. boom length at 0° boom angle (no load)						83.6 ft.					

NOTE: () Boom angles are in degrees.

Boom Angle	Main Boom Length in Feet										
	36.8	48-A	60-B	72-C	84-D	96-E	108-F	120-G	132-H	144-J	150.5
0°	14,400 (28.3)	10,000 (39.5)	5,400 (51.5)	2,850 (63.5)	1,210 (75.5)						

NOTE: () Reference radii in feet.

80114726 V9

Rated Load Reductions from main boom capacity when lifting over main boom nose with:											
26-45' tele. erected (retracted)	2450	2350	2250	2200	2150	2150	2100	2100	2050	2050	2050
26-45' tele. erected (extended)	2800	2600	2450	2350	2300	2250	2200	2200	2150	2150	2150
36' lattice	2000	1850	1750	1700	1650	1600	1600	1550	1550	1550	1500

RATED LIFTING CAPACITIES IN POUNDS
36 FT. FIXED OFFSETABLE BOOM EXTENSION
WITH 0 LB. COUNTERWEIGHT
ON OUTRIGGERS 75% EXTENDED - 360°
36 FT. EXTENSION AT 0° OFFSET ANGLE

Radius in Feet	Main Boom Length in Feet - Code #8215			
	120-G	132-H	144-J	150.5
30	7,640 (78.4)			
35	7,640 (76.9)	6,310 (78.5)	5,060 (79.9)	4,300 (80)
40	7,640 (75.4)	6,310 (77)	5,060 (78.5)	4,300 (78.8)
45	7,640 (73.9)	6,310 (75.6)	5,060 (77.2)	4,300 (77.6)
50	7,130 (72.3)	6,310 (74.1)	5,060 (75.8)	4,300 (76.3)
55	5,860 (70.7)	5,570 (72.7)	5,060 (74.5)	4,300 (75.1)
60	4,800 (69.1)	4,540 (71.2)	4,290 (73.1)	4,120 (73.8)
65	3,890 (67.4)	3,670 (69.7)	3,440 (71.7)	3,280 (72.6)
70	3,070 (65.7)	2,930 (68.1)	2,710 (70.2)	2,560 (71.3)
75	2,370 (64)	2,250 (66.5)	2,080 (68.8)	1,930 (70)
80	1,770 (62.2)	1,650 (64.9)	1,530 (67.3)	1,380 (68.6)
85	1,250 (59.9)	1,130 (63.2)	1,020 (65.7)	900 (67.2)
90	800 (57.4)	680 (61.3)	570 (64.2)	
Min. boom angle for indicated length (no load)	56.4°	60.3°	63.2°	66.2°
Max. boom length at 0° boom angle (no load)	47.6 ft.	47.6 ft.	47.6 ft.	47.6 ft.

NOTE: () Boom angles are in degrees.

80114798_0 V9

BOOM EXTENSION CAPACITY NOTES:

1. 36 ft. extension length may be used for single line lifting service only.
 2. For boom angles not shown, use the rating of the next lower boom angle.
- WARNING:** Operation of this machine with heavier loads than the capacities listed is strictly prohibited. Machine tipping with boom extension occurs rapidly and without advance warning.
3. Boom angle is the angle above or below horizontal of the longitudinal axis of the boom base section after lifting rated load.
 4. Capacities listed are with outriggers properly extended and vertical jacks set only.

**RATED LIFTING CAPACITIES IN POUNDS
36 FT. FIXED OFFSETABLE BOOM EXTENSION
WITH 0 LB. COUNTERWEIGHT
ON OUTRIGGERS 75% EXTENDED - 360°
36 FT. EXTENSION AT 15° OFFSET ANGLE**

Radius in Feet	Main Boom Length in Feet - Code #8220			
	120-G	132-H	144-J	150.5
40	7,000 (79)			
45	6,730 (77.5)			
50	6,540 (76.1)	6,400 (77.1)		
55	6,360 (74.6)	6,150 (75.8)	5,410 (76.8)	4,650 (77.3)
60	5,640 (73.1)	5,400 (74.4)	5,170 (75.6)	4,650 (76.1)
65	4,660 (71.6)	4,450 (73.1)	4,240 (74.3)	4,080 (74.9)
70	3,750 (70)	3,630 (71.7)	3,440 (73)	3,290 (73.7)
75	2,990 (68.4)	2,890 (70.2)	2,740 (71.7)	2,610 (72.5)
80	2,330 (66.7)	2,240 (68.7)	2,140 (70.4)	2,010 (71.2)
85	1,760 (64.4)	1,670 (67.2)	1,580 (69)	1,470 (69.9)
90	1,260 (61.9)	1,170 (65.3)	1,080 (67.6)	990 (68.6)
95	820 (59.3)	730 (62.9)	640 (66.1)	560 (67.2)
Min. boom angle for indicated length (no load)	58.3°	61.9°	65.1°	66.2°
Max. boom length at 0° boom angle (no load)	47.6 ft.	47.6 ft.	47.6 ft.	47.6 ft.

NOTE: () Boom angles are in degrees.

80114798_15 V9

BOOM EXTENSION CAPACITY NOTES:

1. 36 ft. extension length may be used for single line lifting service only.
 2. For boom angles not shown, use the rating of the next lower boom angle.
- WARNING:** Operation of this machine with heavier loads than the capacities listed is strictly prohibited. Machine tipping with boom extension occurs rapidly and without advance warning.
3. Boom angle is the angle above or below horizontal of the longitudinal axis of the boom base section after lifting rated load.
 4. Capacities listed are with outriggers properly extended and vertical jacks set only.

**RATED LIFTING CAPACITIES IN POUNDS
36 FT. FIXED OFFSETABLE BOOM EXTENSION
WITH 0 LB. COUNTERWEIGHT
ON OUTRIGGERS 75% EXTENDED - 360°
36 FT. EXTENSION AT 30° OFFSET ANGLE**

Radius in Feet	Main Boom Length in Feet - Code #8225			
	120-G	132-H	144-J	150.5
50	5,660 (78.8)			
55	5,530 (77.3)	5,440 (78.4)		
60	5,420 (75.7)	5,350 (77)	5,190 (78.1)	
65	5,320 (74.1)	5,150 (75.6)	4,960 (76.8)	4,820 (77.4)
70	4,360 (72.5)	4,270 (74.1)	4,090 (75.5)	3,960 (76.2)
75	3,530 (70.8)	3,460 (72.6)	3,330 (74.2)	3,210 (74.9)
80	2,810 (68.8)	2,750 (71.1)	2,670 (72.8)	2,550 (73.6)
85	2,190 (66.1)	2,130 (69.5)	2,060 (71.4)	1,980 (72.3)
90	1,650 (63.4)	1,580 (67.2)	1,520 (70)	1,450 (71)
95	1,160 (60.6)	1,100 (64.6)	1,040 (68.1)	970 (69.6)
100	730 (57.7)	670 (62)	610 (65.7)	540 (67.5)
Min. boom angle for indicated length (no load)	56.7°	61°	64.7°	66.5°
Max. boom length at 0° boom angle (no load)	47.6 ft.	47.6 ft.	47.6 ft.	47.6 ft.

NOTE: () Boom angles are in degrees.

80114798_30 V9

BOOM EXTENSION CAPACITY NOTES:

1. 36 ft. extension length may be used for single line lifting service only.
2. For boom angles not shown, use the rating of the next lower boom angle.
WARNING: Operation of this machine with heavier loads than the capacities listed is strictly prohibited. Machine tipping with boom extension occurs rapidly and without advance warning.
3. Boom angle is the angle above or below horizontal of the longitudinal axis of the boom base section after lifting rated load.
4. Capacities listed are with outriggers properly extended and vertical jacks set only.

RATED LIFTING CAPACITIES IN POUNDS

37 FT. - 151 FT. BOOM

WITH 0 LB. COUNTERWEIGHT

ON OUTRIGGERS 50% EXTENDED - 360°

Radius in Feet	Main Boom Length in Feet - Code #8401 or #8403 or #8405										
	36.8	48-A	60-B	72-C	84-D	96-E	108-F	120-G	132-H	144-J	150.5
6	110,000 (71.5)	41,500 (76.7)									
8	104,500 (68)	41,500 (74.2)	41,500 (78.2)								
10	91,400 (64.4)	41,500 (71.6)	41,500 (76.2)	41,500 (79.4)							
12	73,500 (60.7)	41,500 (69)	41,500 (74.2)	41,500 (77.8)							
15	47,550 (54.9)	41,500 (64.9)	41,500 (71.1)	39,950 (75.3)	37,650 (78)	33,200 (79.9)					
20	27,550 (43.7)	27,300 (57.8)	26,400 (65.8)	25,400 (71)	24,350 (74.5)	23,400 (77)	22,400 (79.3)				
25	16,900 (28.9)	18,000 (49.9)	18,100 (60.3)	17,650 (66.7)	17,100 (71)	16,550 (74.1)	16,000 (76.7)	15,500 (78.9)			
30		12,200 (40.5)	12,700 (54.3)	12,850 (62.1)	12,500 (67.4)	12,200 (71.1)	11,850 (74.2)	11,500 (76.7)	11,200 (78.4)	10,850 (79.9)	
35		8,430 (28.5)	9,080 (47.6)	9,410 (57.2)	9,390 (63.6)	9,200 (68)	8,970 (71.5)	8,750 (74.3)	8,510 (76.4)	8,260 (78)	8,060 (78.8)
40			6,510 (39.6)	6,830 (52)	7,020 (59.5)	6,980 (64.8)	6,820 (68.8)	6,670 (72)	6,510 (74.3)	6,320 (76.1)	6,160 (77)
45			4,570 (30)	4,960 (46.1)	5,130 (55.3)	5,270 (61.4)	5,170 (66.1)	5,070 (69.6)	4,950 (72.1)	4,810 (74.2)	4,670 (75.2)
50			3,100 (15.5)	3,510 (39.2)	3,700 (50.7)	3,830 (57.8)	3,870 (63)	3,790 (67.1)	3,710 (70)	3,600 (72.3)	3,480 (73.4)
55				2,330 (31.1)	2,570 (45.2)	2,700 (54)	2,780 (59.8)	2,760 (64.4)	2,690 (67.8)	2,610 (70.3)	2,500 (71.5)
60				1,390 (20.4)	1,630 (39.1)	1,780 (49.9)	1,860 (56.5)	1,900 (61.5)	1,850 (65.4)	1,780 (68.3)	1,680 (69.6)
65					850 (32)	1,030 (44.8)	1,100 (53)	1,170 (58.5)	1,140 (62.8)	1,080 (66.2)	990 (67.7)
70								530 (55.4)	530 (60.2)		
Min. boom angle for indicated length (no load)					31°	43.8°	52°	54.4°	59.2°	65.2°	66.7°
Max. boom length at 0° boom angle (no load)					71.6 ft.						

NOTE: () Boom angles are in degrees.

Boom Angle	Main Boom Length in Feet										
	36.8	48-A	60-B	72-C	84-D	96-E	108-F	120-G	132-H	144-J	150.5
0°	12,700 (28.3)	6,030 (39.5)	2,730 (51.5)	850 (63.5)							

NOTE: () Reference radii in feet.

80114727 V9

Rated Load Reductions from main boom capacity when lifting over main boom nose with:											
26-45' tele. erected (retracted)	2450	2350	2250	2200	2150	2150	2100	2100	2050	2050	2050
26-45' tele. erected (extended)	2800	2600	2450	2350	2300	2250	2200	2200	2150	2150	2150
36' lattice	2000	1850	1750	1700	1650	1600	1600	1550	1550	1550	1500

RATED LIFTING CAPACITIES IN POUNDS
36 FT. FIXED OFFSETABLE BOOM EXTENSION
WITH 0 LB. COUNTERWEIGHT
ON OUTRIGGERS 50% EXTENDED - 360°
36 FT. EXTENSION AT 0° OFFSET ANGLE

Radius in Feet	Main Boom Length in Feet - Code #8415			
	120-G	132-H	144-J	150.5
30	7,640 (78.4)			
35	7,640 (76.9)	6,310 (78.5)	5,060 (79.9)	4,300 (80)
40	6,960 (75.4)	6,310 (77)	5,060 (78.5)	4,300 (78.8)
45	5,480 (73.9)	5,180 (75.6)	4,890 (77.2)	4,300 (77.6)
50	4,290 (72.3)	4,020 (74.1)	3,760 (75.8)	3,580 (76.3)
55	3,310 (70.7)	3,070 (72.7)	2,840 (74.5)	2,670 (75.1)
60	2,490 (69.1)	2,270 (71.2)	2,060 (73.1)	1,900 (73.8)
65	1,800 (67.4)	1,600 (69.7)	1,400 (71.7)	1,250 (72.6)
70	1,210 (65.7)	1,010 (68.1)	830 (70.2)	680 (71.3)
75	700 (64)	510 (66.5)		
Min. boom angle for indicated length (no load)	63°	65.5°	69.2°	70.3°
Max. boom length at 0° boom angle (no load)	47.6 ft.	47.6 ft.	47.6 ft.	47.6 ft.

NOTE: () Boom angles are in degrees.

80114799_0 V9

BOOM EXTENSION CAPACITY NOTES:

1. 36 ft. extension length may be used for single line lifting service only.
2. For boom angles not shown, use the rating of the next lower boom angle.

WARNING: Operation of this machine with heavier loads than the capacities listed is strictly prohibited. Machine tipping with boom extension occurs rapidly and without advance warning.
3. Boom angle is the angle above or below horizontal of the longitudinal axis of the boom base section after lifting rated load.
4. Capacities listed are with outriggers properly extended and vertical jacks set only.

RATED LIFTING CAPACITIES IN POUNDS
36 FT. FIXED OFFSETABLE BOOM EXTENSION
WITH 0 LB. COUNTERWEIGHT
ON OUTRIGGERS 50% EXTENDED - 360°
36 FT. EXTENSION AT 15° OFFSET ANGLE

Radius in Feet	Main Boom Length in Feet - Code #8420			
	120-G	132-H	144-J	150.5
40	7,000 (79)			
45	6,620 (77.5)			
50	5,300 (76.1)	5,050 (77.1)		
55	4,210 (74.6)	3,990 (75.8)	3,770 (76.8)	3,610 (77.3)
60	3,310 (73.1)	3,100 (74.4)	2,900 (75.6)	2,760 (76.1)
65	2,540 (71.6)	2,350 (73.1)	2,170 (74.3)	2,030 (74.9)
70	1,880 (70)	1,700 (71.7)	1,530 (73)	1,400 (73.7)
75	1,300 (68.4)	1,140 (70.2)	980 (71.7)	850 (72.5)
80	800 (66.7)	640 (68.7)		
Min. boom angle for indicated length (no load)	65.7°	67.7°	70.7°	71.5°
Max. boom length at 0° boom angle (no load)	47.6 ft.	47.6 ft.	47.6 ft.	47.6 ft.

NOTE: () Boom angles are in degrees.

80114799_15 V9

BOOM EXTENSION CAPACITY NOTES:

1. 36 ft. extension length may be used for single line lifting service only.
 2. For boom angles not shown, use the rating of the next lower boom angle.
- WARNING:** Operation of this machine with heavier loads than the capacities listed is strictly prohibited. Machine tipping with boom extension occurs rapidly and without advance warning.
3. Boom angle is the angle above or below horizontal of the longitudinal axis of the boom base section after lifting rated load.
 4. Capacities listed are with outriggers properly extended and vertical jacks set only.

**RATED LIFTING CAPACITIES IN POUNDS
36 FT. FIXED OFFSETABLE BOOM EXTENSION
WITH 0 LB. COUNTERWEIGHT
ON OUTRIGGERS 50% EXTENDED - 360°
36 FT. EXTENSION AT 30° OFFSET ANGLE**

Radius in Feet	Main Boom Length in Feet - Code #8425			
	120-G	132-H	144-J	150.5
50	5,660 (78.8)			
55	5,040 (77.3)	4,830 (78.4)		
60	4,050 (75.7)	3,860 (77)	3,670 (78.1)	
65	3,200 (74.1)	3,030 (75.6)	2,860 (76.8)	2,730 (77.4)
70	2,470 (72.5)	2,310 (74.1)	2,160 (75.5)	2,040 (76.2)
75	1,830 (70.8)	1,690 (72.6)	1,550 (74.2)	1,440 (74.9)
80	1,280 (68.8)	1,140 (71.1)	1,010 (72.8)	900 (73.6)
85	780 (66.1)	660 (69.5)	530 (71.4)	
Min. boom angle for indicated length (no load)	65.1°	68.5°	70.4°	72.6°
Max. boom length at 0° boom angle (no load)	47.6 ft.	47.6 ft.	47.6 ft.	47.6 ft.

NOTE: () Boom angles are in degrees.

80114799_30 V9

BOOM EXTENSION CAPACITY NOTES:

1. 36 ft. extension length may be used for single line lifting service only.
2. For boom angles not shown, use the rating of the next lower boom angle.

WARNING: Operation of this machine with heavier loads than the capacities listed is strictly prohibited. Machine tipping with boom extension occurs rapidly and without advance warning.
3. Boom angle is the angle above or below horizontal of the longitudinal axis of the boom base section after lifting rated load.
4. Capacities listed are with outriggers properly extended and vertical jacks set only.

RATED LIFTING CAPACITIES IN POUNDS

37 FT. - 151 FT. BOOM

WITH 0 LB. COUNTERWEIGHT

ON OUTRIGGERS 0% EXTENDED - 360°

Radius in Feet	Main Boom Length in Feet - Code #8801 or #8803 or #8805						
	36.8	48-A	60-B	72-C	84-D	96-E	108-F
6	58,700 (71.5)	41,500 (76.7)					
8	38,050 (68)	35,200 (74.2)	32,400 (78.2)				
10	27,050 (64.4)	25,650 (71.6)	24,100 (76.2)	22,600 (79.4)			
12	20,200 (60.7)	19,550 (69)	18,650 (74.2)	17,700 (77.8)			
15	13,650 (54.9)	13,600 (64.9)	13,200 (71.1)	12,700 (75.3)	12,100 (78)	11,550 (79.9)	
20	7,270 (43.7)	7,840 (57.8)	7,840 (65.8)	7,680 (71)	7,420 (74.5)	7,150 (77)	6,840 (79.3)
25	3,590 (28.9)	4,300 (49.9)	4,620 (60.3)	4,620 (66.7)	4,510 (71)	4,380 (74.1)	4,200 (76.7)
30		1,980 (40.5)	2,410 (54.3)	2,560 (62.1)	2,540 (67.4)	2,480 (71.1)	2,380 (74.2)
35			810 (47.6)	1,060 (57.2)	1,110 (63.6)	1,110 (68)	1,050 (71.5)
Min. boom angle for indicated length (no load)		39.5°	46.6°	56.2°	62.6°	67°	70.5°
Max. boom length at 0° boom angle (no load)	36.8 ft.						

NOTE: () Boom angles are in degrees.

Boom Angle	Main Boom Length in Feet						
	36.8	48-A	60-B	72-C	84-D	96-E	108-F
0°	1,840 (28.3)						

NOTE: () Reference radii in feet. 80114728 V9

Rated Load Reductions from main boom capacity when lifting over main boom nose with:							
26-45' tele. erected (retracted)	2450	2350	2250	2200	2150	2150	2100
26-45' tele. erected (extended)	2800	2600	2450	2350	2300	2250	2200
36' lattice	2000	1850	1750	1700	1650	1600	1600